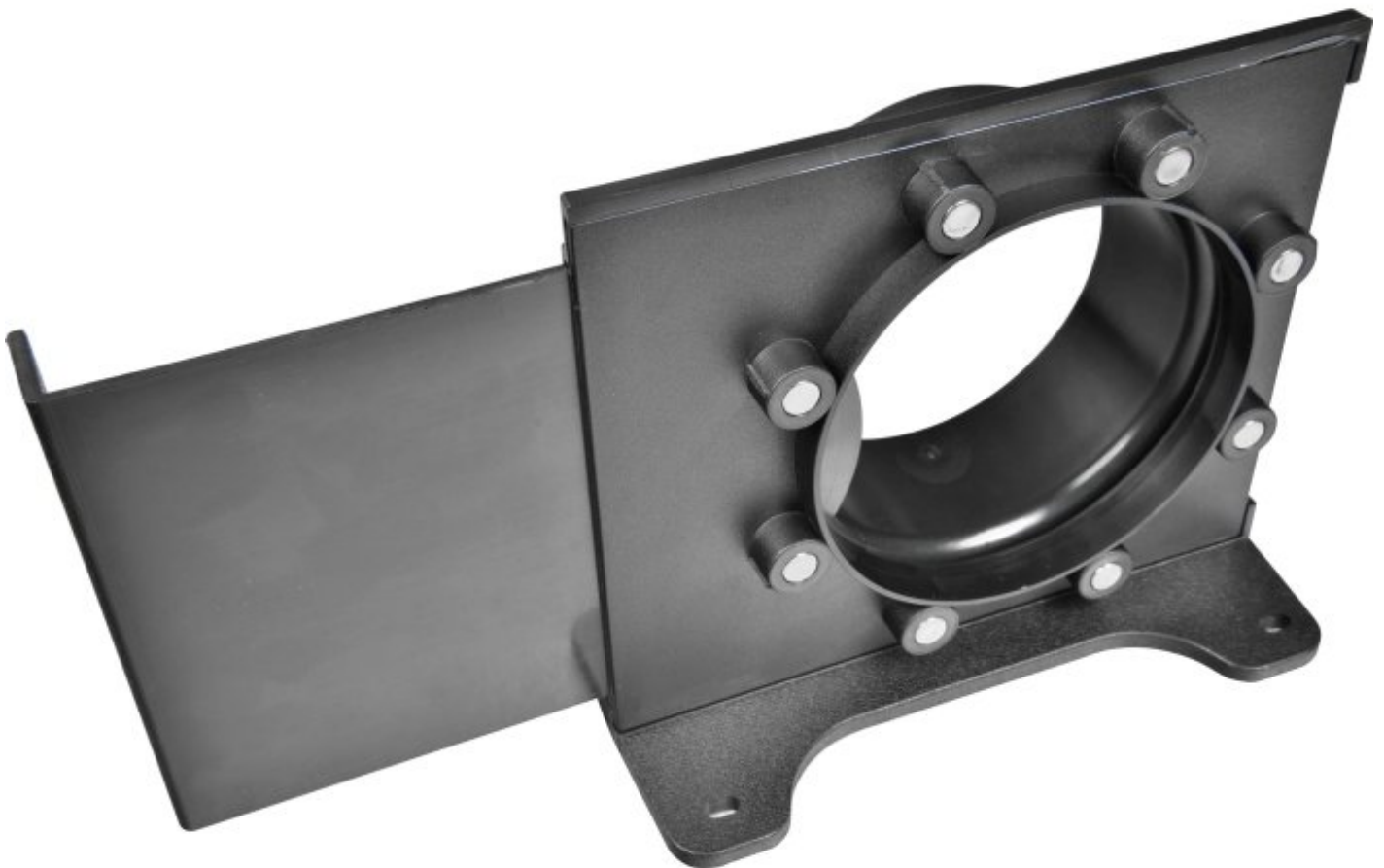


HAFCO DCAM-100W



Magnetic Quick Connect Wall Mounted Blast Gate

Ø100mm External



HAFCO Magnetic Quick Connect Wall Mounted Blast Gate DCAM-100W



Gate Open



Gate Closed



Side View

Description

The Magnetic quick connect dust fittings provide an easy, effortless way to connect flexible hose to machines and tools. Even if you misalign them, the magnets are strong enough to self-adjust and lock in place.

Note: Sold individually and requires more than one to operate

Features

- Ø100mm OD port, suitable for use with 100mm (4") dust hose
- Wall mount design
- Made from tough PVC
- Magnets embedded into each fitting
- Self aligning connectors for quick and easy connections

Includes

- 1 x 100mm (4") Magnetic Quick Connect one end and 100mm OD Port on other.

Specifications

ORDER CODE	W3354
MODEL	DCAM-100C
Type	Magnetic Blast Gate
Application	Timber
Size	Ø100mm ID
Suits	Dust Fittings
Nett Weight (kg)	0.2