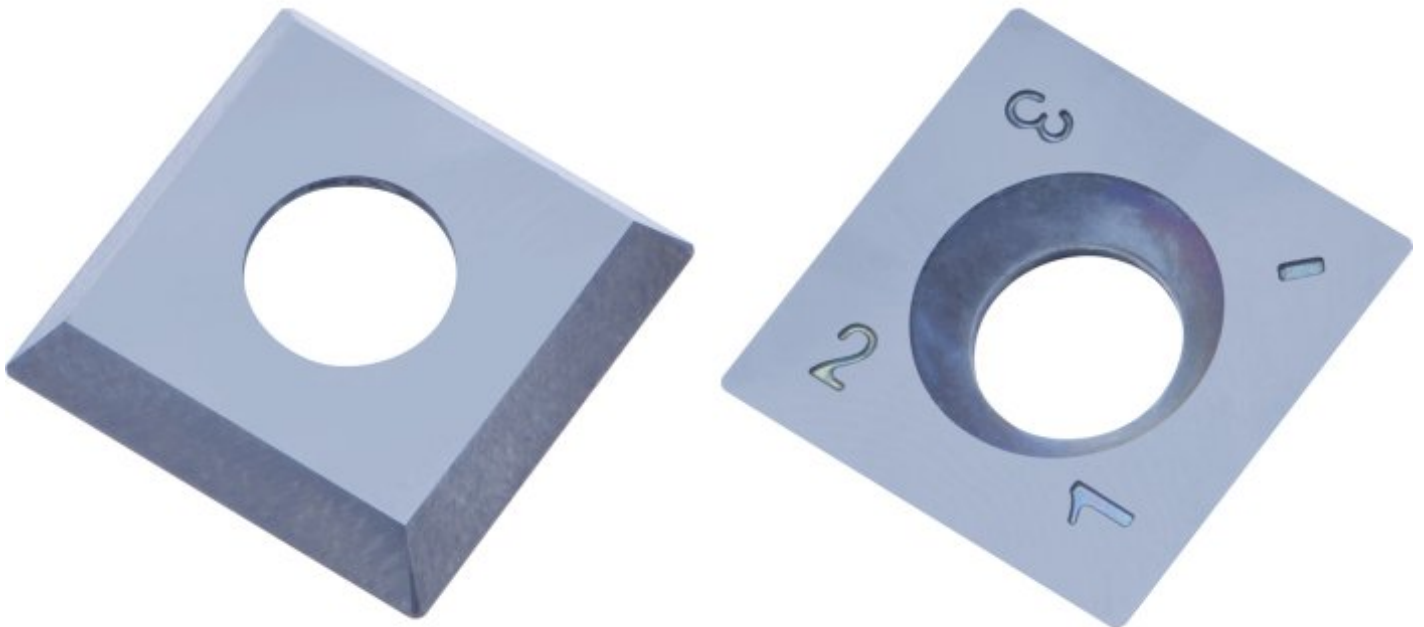


**HAFCO-WOODMASTER**

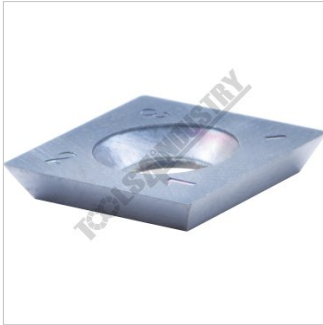


**15mm - Square Carbide Insert**

**2 Piece Pack**



## HAFCO-WOODMASTER 15mm - Square Carbide Insert



Low View

### Description

Replacement square tungsten carbide inserts are designed to suit carbide woodturning chisels. Ideal for roughing, shaping and general-purpose turning, this durable cutter provides a long service life and delivers a clean, smooth finish on a wide range of timbers.

Unlike traditional HSS tools, the carbide insert requires no sharpening. Simply rotate the cutter to a fresh edge when dull, extending tool life and reducing downtime. When all cutting edges have been used, replace the insert and continue turning.

### Features

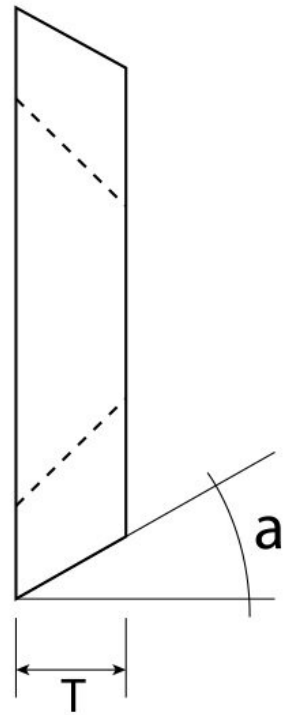
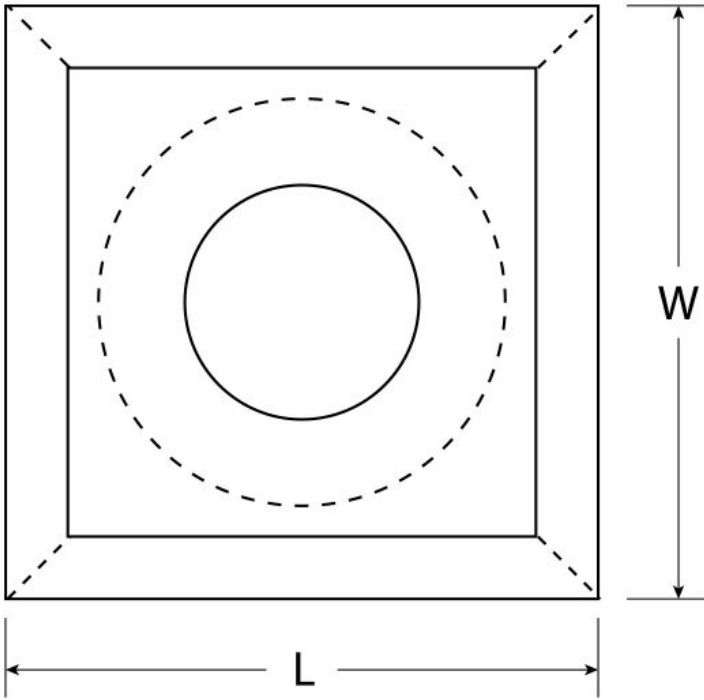
- Square tungsten carbide insert
- Suits carbide woodturning chisel sets
- Four usable cutting edges for extended life
- Produces a smooth, clean finish
- No sharpening required
- Rotate cutter when dull for a fresh cutting edge
- Ideal for roughing, shaping and general turning applications
- Supplied as a convenient 2-piece pack

### Includes

- 2 Piece Pack

### Specifications

**HAFCO-WOODMASTER 15mm - Square Carbide Insert**



**HAFCO-WOODMASTER 15mm - Square Carbide Insert**

**ORDER CODE**

**HAFCO-WOODMASTER 15mm - Square Carbide Insert**

W30487

<b>MODEL</b>	~
<b>Type</b>	Square Carbide Insert
<b>No. of Piece</b>	2
<b>Thread Size</b>	~
<b>D</b>	~
<b>L (mm)</b>	15
<b>W (mm)</b>	15
<b>T (mm)</b>	2.5
<b>a (deg)</b>	30°
<b>Suits</b>	Wood Turning Tools - Insert Type