

METALMASTER WT28-LFK2



Table & Accessory Lifting Kit

1000kg WLL Total Capacity as a pair



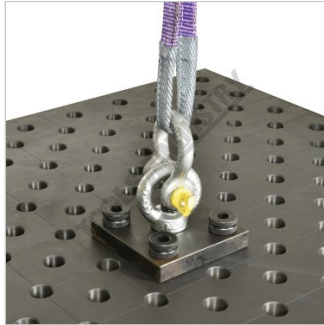
METALMASTER Table & Accessory Lifting Kit WT28-LFK2



Table-accessory lifting kit



Lock position



Shown using optional shackle and strap



Shown using optional lifting kit

Description

Use to assist in lifting of our METALMASTER M28 Pro Series welding tables, riser blocks & any large or heavy table accessories. The kit comes standard with 2pcs of 4-hole lifting plates with M24 Eye nuts along with 8pcs of ball lock pins to secure the plates in place making them the perfect addition to your welding table.

Features

- Heavy steel construction
- Fast & easy way to securely lift fixture elements to a table
- CNC machined surfaces to ensure precision tolerances
- Burnished finish surface treatment to prevent rust
- 1000kg WLL as a pair or 500kg WLL for each
- Suits Ø28mm Welding Tables Holes
- It is recommended that a minimum of 2 pairs (4pcs) of the lifting plates be used when lifting WT28-3015N - 3000 x 1500mm M28 Pro Welding Tables

Specifications

ORDER CODE	W08290
MODEL	WT28-LFK2
Type	Lifting Kit
Size	1000kg WLL (500kg WLL each)
Quantity Per Pack (No.)	2
Suits	Ø28mm Table Holes
Nett Weight (kg)	~