

BUILDPRO T60125

BuildPro™

BuildPro Heavy Duty Riser Block

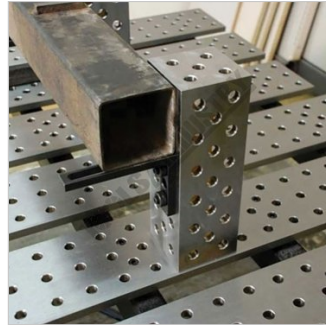
100 x 100 x 200mm, 5 Faces



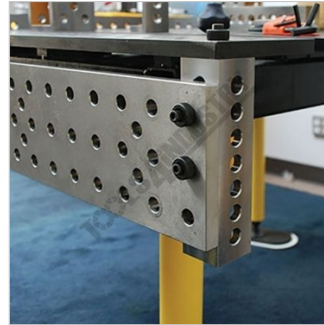
BUILDPRO BuildPro Heavy Duty Riser Block T60125



Functions as a Heavy Duty Building Block to Elevate Clamps and Workpieces



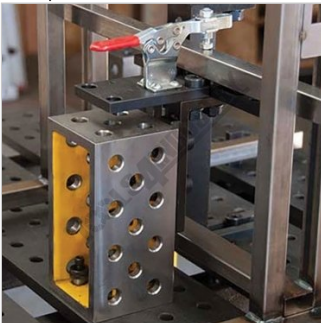
Right Angle Brackets can be Mounted to the Riser Blocks to Hold at Varying Heights



Riser Block Used to Mount BuildPro Plate in Vertical Position



Table Mount C Clamps can Be Mounted to the Riser Blocks for Push Down Clamping for Taller Workpieces



Riser Blocks Used for Many Versatile Applications

Description

These five face precision machined Riser Blocks feature accurate bored holes in a diagonal pattern.

Use Riser Blocks individually, or stacked, to elevate a workpiece or clamp. Cross join the Blocks for use as a beam. Use the Blocks to mount a BuildPro® plate to the side or end of the table, or to join tables together.

NEW! Models T60120, T60125, and T60130 feature two slots at one end for adjustable positioning.

- The versatile, five-sided Riser Block functions as a heavy duty "building block" to elevate clamps and workpieces.
- Right Angle Brackets can be mounted to the Riser Blocks to hold stock at varying heights.
- Riser Block used to mount BuildPro® plate in vertical position.
- Table Mount C-Clamps can be mounted to the Riser Blocks for push down clamping for taller workpieces.

The very practical, modular design of the BuildPro® Table makes it easy to set-up and tear down for job at hand, big or small. Save time and money by holding, positioning and locating quickly and easily with a wide variety of BuildPro® clamps and accessories.

All BuildPro® Tables have 16mm thick steel plate with Ø16mm holes in a 50mm grid pattern. All tables, except BuildPro® MAX, have 40mm slots between plates.

BUILDPRO BuildPro Heavy Duty Riser Block T60125**Specifications**

ORDER CODE	W08095
MODEL	T60125
Type	Riser Block - 5 Face
Suits Table Hole Size (Diameter)	Ø16mm
Size	100 x 100 x 200mm
Plate Thickness (mm)	16
Nett Weight (kg)	5.67