

METALMASTER WT16-LFK2



Table & Accessory Lifting Kit

500kg WLL Total Capacity as a pair



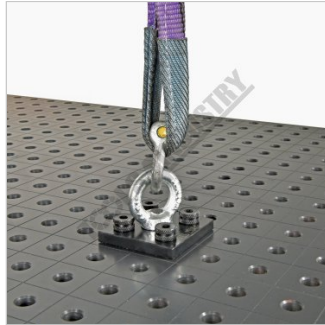
METALMASTER Table & Accessory Lifting Kit WT16-LFK2



Lock Position



Bottom View on Welding Table



Shown Using Optional Schackle and Strap



Shown Using Optional Lifting Kit

Description

Use to assist in lifting of our METALMASTER M16 Pro Series welding tables, riser blocks & any large or heavy table accessories. The kit comes standard with 2pcs of 4-hole lifting plates with M16 Eye nuts along with 8pcs of ball lock pins to secure the plates in place making them the perfect addition to your welding table.

Features

- Heavy steel construction
- Fast & easy way to securely lift fixture elements to a table
- CNC machined surfaces to ensure precision tolerances
- Burnished finish surface treatment to prevent rust
- 500kg WLL as a pair or 250kg WLL for each
- Suits Ø16mm Welding Tables Holes
- It is recommended that a minimum of 2 pairs (4pcs) of the lifting plates be used when lifting WT16-2412N - 2400 x 1200mm M16 Pro Series Welding Tables

Specifications

ORDER CODE	W07820
MODEL	WT16-LFK2
Type	Lifting Kit
Size	500kg WLL (250kg WLL each)
Quantity Per Pack (No.)	2
Suits	Ø16mm Table Holes
Nett Weight (kg)	~