

**SAFEWAY PQV-100V**



**Safeway Pneumatic Production Vice**

**100mm Jaw Width**



## SAFEWAY Safeway Pneumatic Production Vice PQV-100V

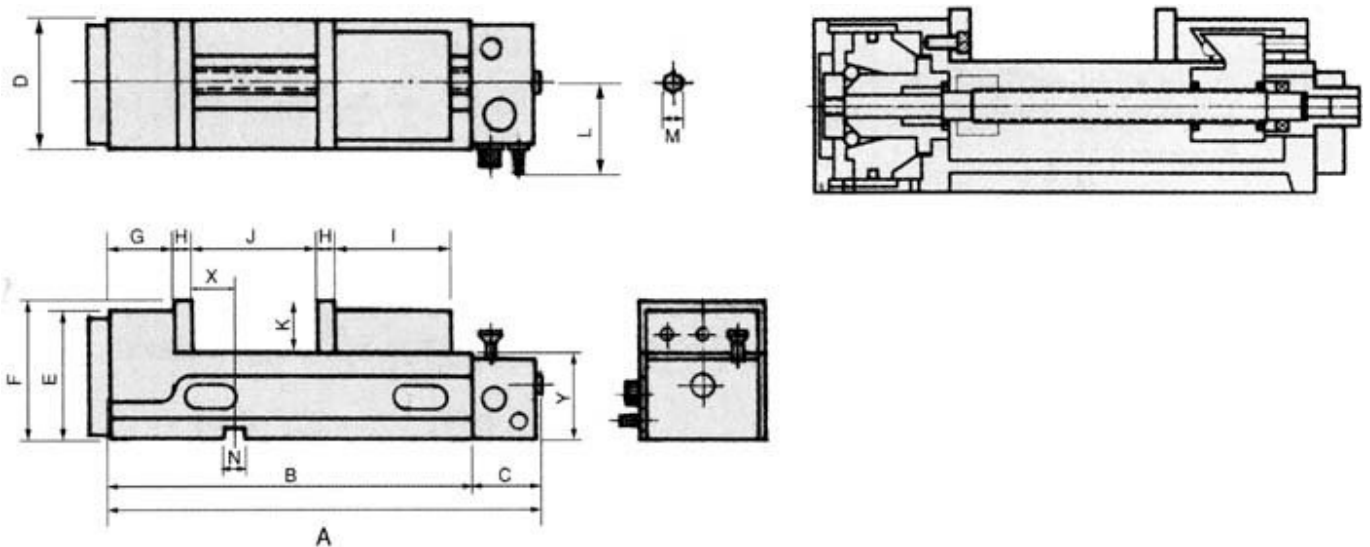
### Description

Designed for production applications with simple ON/OFF operation.

### Features

- Robust construction of one piece casting consisting of fixed jaw and vise bed
- Rigid casting of high tensile ductile iron FCD60JIS (Equal to GGG60) with 60kgs/mm<sup>2</sup> or 80,000 psi tensile strength
- Suitable for mass production runs on machine centre's, milling machines, drilling machines or special purpose machines
- Compact pneumatic mechanism design. No oil is required only a air supply
- Compact total length of vice with Max. clamping capacity
- Safety locking mechanism for unexpected termination of air supply. After pneumatic clamping. The work piece will be remain clamped firmly even without the air supply
- Easy and simple ON-OFF switch control for pneumatic operation
- Safety protection with Max. pneumatic clamping stroke is 4mm to prevent inserting operator's finger during clamping operation. (Stroke is 2mm best power capacity)
- Rapid ON-OFF only 1.5sec
- Free adjusting of Max. pneumatic clamping pressure from 0-1000kgf (4000) by air regulator, jaw opening 2mm is best clamping power capacity of workpiece
- Vise bed flame hardened to HRC45° to reduce up wear and maintain accuracy
- Down trust "semi-spherical segment" mechanism eliminates the jaw and work-piece lifting

### Specifications



<b>ORDER CODE</b>	V340
<b>MODEL</b>	PQV-100V
<b>D - Jaw Width (mm)</b>	100
<b>J - Jaw Opening (mm)</b>	105
<b>K - Jaw Height (mm)</b>	48
<b>Power (kgf)</b>	0-1000
<b>Air Pressure (kg/cm<sup>2</sup>)</b>	1.5-7.0

## SAFEWAY Safeway Pneumatic Production Vice PQV-100V

<b>Stroke (mm)</b>	0-3
<b>A (mm)</b>	442
<b>B (mm)</b>	340
<b>C (mm)</b>	102
<b>E (mm)</b>	130
<b>F (mm)</b>	133
<b>G (mm)</b>	96
<b>H (mm)</b>	15
<b>I (mm)</b>	105
<b>L (mm)</b>	95
<b>M (mm)</b>	14
<b>N (mm)</b>	16
<b>X (mm)</b>	45
<b>Y (mm)</b>	85
<b>Dimensions (L x W x H) (mm)</b>	600 x 220 x 185
<b>Nett Weight (kg)</b>	27