

**SAFEWAY PHV-160**



**Safeway Mechanical/Hydraulic Machine Vice**

**160mm Jaw Width**



**SAFEMAN Safeway Mechanical/Hydraulic Machine Vice PHV-160**



Front View



Hydraulic Tension with Handle



Knurled Head Lifting Pins



3 Pin Position Clamping Range



Removable Jaws

**Description**

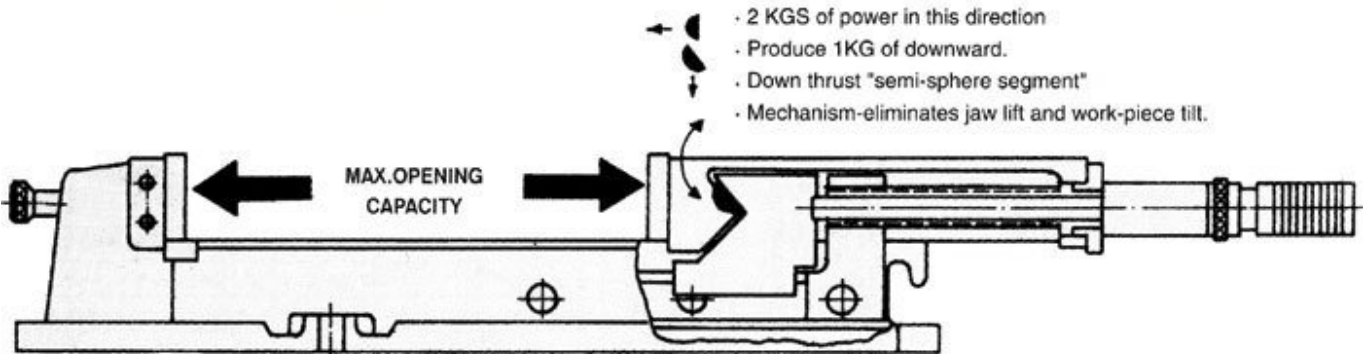
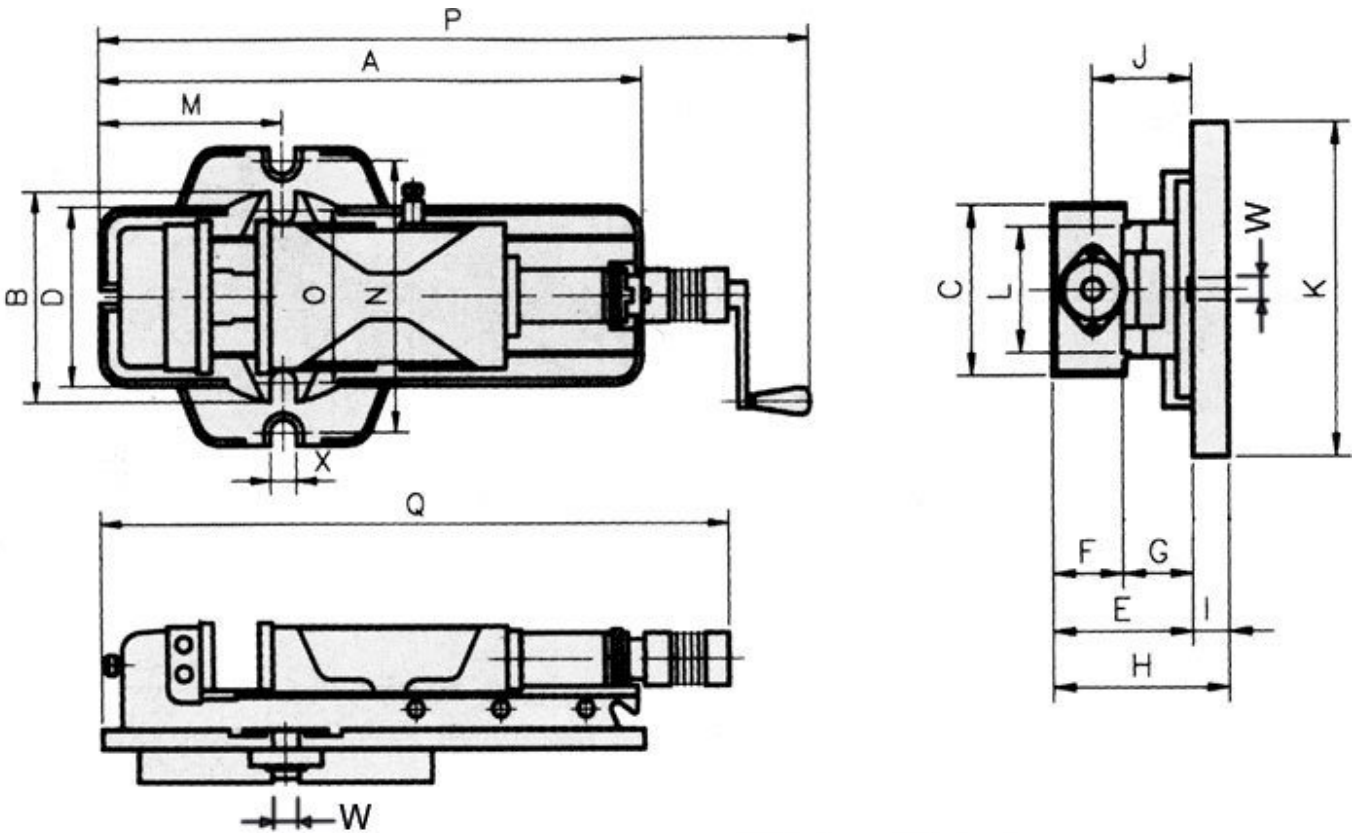
160mm MECHANICAL/HYDRAULIC MACHINE VICE: Precision manufactured from rigid material - Ductile iron FCD60JIS (equal to GGG60) with 60kg/mm<sup>2</sup> or 80,000 psi tensile strength.  
 ;All Safeway vices are precision ground and the surfaces set to the tolerances set out below. This allows these vices to be used in pairs and multiple configurations.

**Features**

- Flame-hardened to HRC 45 to take up wear and maintain accuracy
- The semi-sphere segment eliminates movable jaw lifting and creates a down force of 1kg for every 2kg of clamping force, preventing the work piece from tilting
- The hydraulic cylinder is mounted externally for easy maintenance
- Large clamping range through screw adjustment and 3 pin positions in the base.
- The vise can be used in either a mechanical mode or in a hydraulic mode

**Specifications**

**SAFEWAY Safeway Mechanical/Hydraulic Machine Vice PHV-160**



**SAFEWAY Safeway Mechanical/Hydraulic Machine Vice PHV-160**

**ORDER CODE**

**SAFEWAY Safeway Mechanical/Hydraulic Machine Vice PHV-160**

V332

<b>MODEL</b>	PHV-160
<b>C - Jaw Width (mm)</b>	160
<b>Max. - Jaw Opening (mm)</b>	310
<b>F - Jaw Height (mm)</b>	58
<b>Max. Pressure (kgf)</b>	4000
<b>A (mm)</b>	625
<b>B (mm)</b>	240
<b>D (mm)</b>	205
<b>E (mm)</b>	140
<b>G (mm)</b>	82
<b>H (mm)</b>	179
<b>I (mm)</b>	39
<b>J (mm)</b>	105
<b>K (mm)</b>	340
<b>L (mm)</b>	125
<b>M (mm)</b>	208
<b>N (mm)</b>	300
<b>O (mm)</b>	196
<b>P (mm)</b>	750
<b>Q (mm)</b>	640
<b>X (mm)</b>	18
<b>Keyway (W) (mm)</b>	16
<b>Nett Weight (kg)</b>	57