

SAFEWAY LJ-200V



Safeway End Mount Hardened Jaws - 200mm

Mounts To Outer Section of Vice when Maximum Opening is Required - J1, J2, J3



SAFEWAY Safeway End Mount Hardened Jaws - 200mm LJ-200V

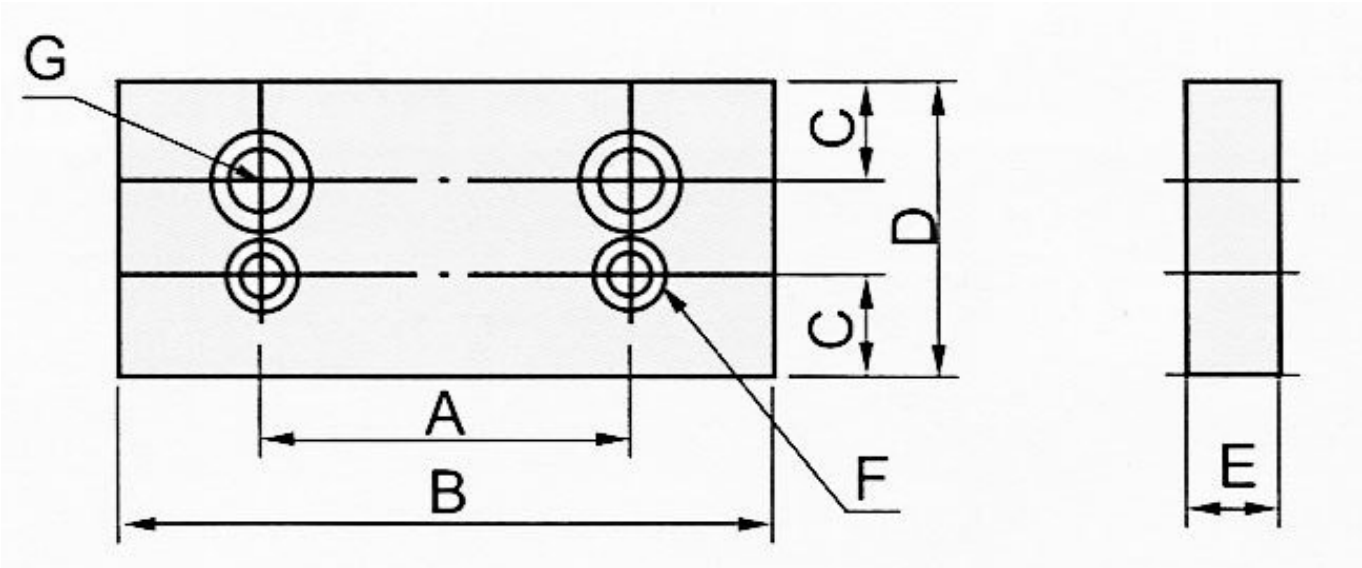
Description

Hardened jaws suitable for clamping work pieces were the finished surface is smooth and needs to be protected.

Features

- Hardened Jaws to HRC55° -58°
- Supplied in pairs

Specifications



ORDER CODE	V3218
MODEL	LJ-200V
Type	End Mount Jaws
A (mm)	120
B (mm)	200
C (mm)	28
D (mm)	88
E (mm)	30
F (mm)	M12 x 35 Long
G (mm)	M16 x 65 Long
H (mm)	~
J (mm)	~
K (mm)	~
L (mm)	~
M (mm)	~
N (mm)	~
Nett Weight (kg)	3