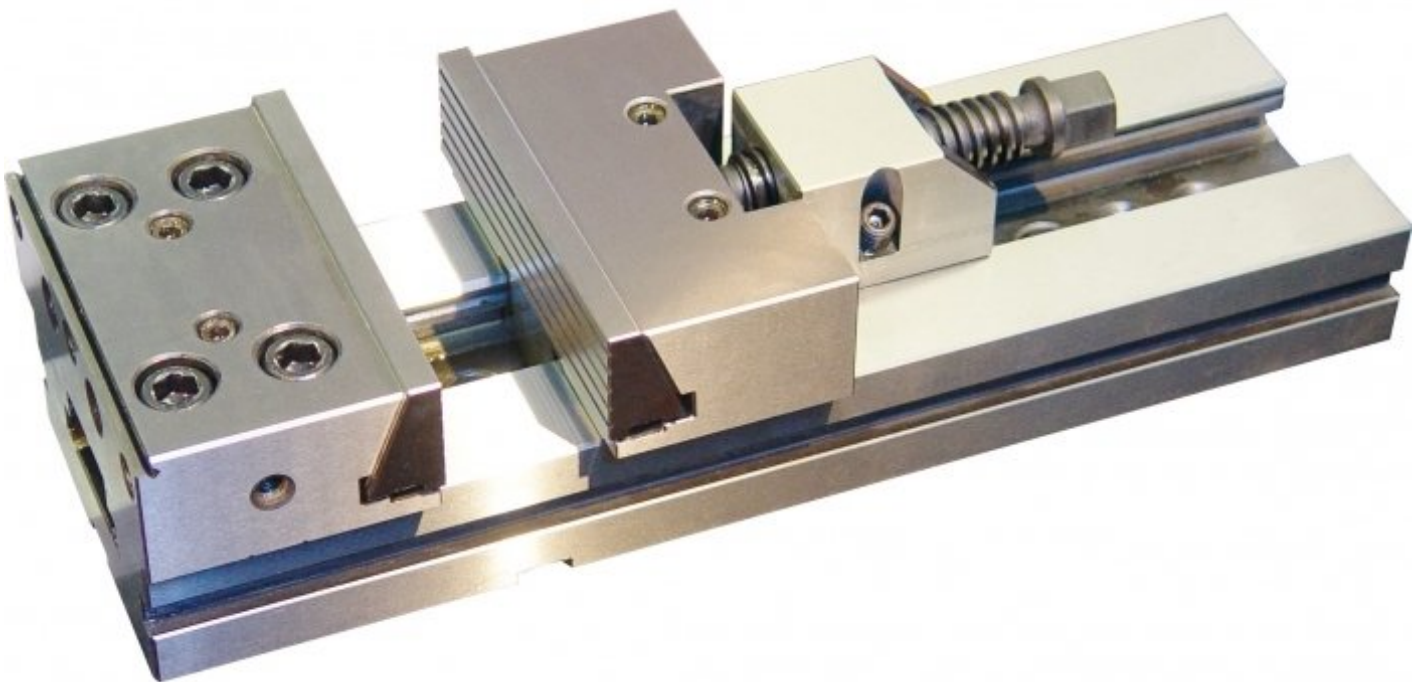


**TOOLMASTER**

**Modular Machine Vice**

**152mm Jaw Width**



## TOOLMASTER Modular Machine Vice

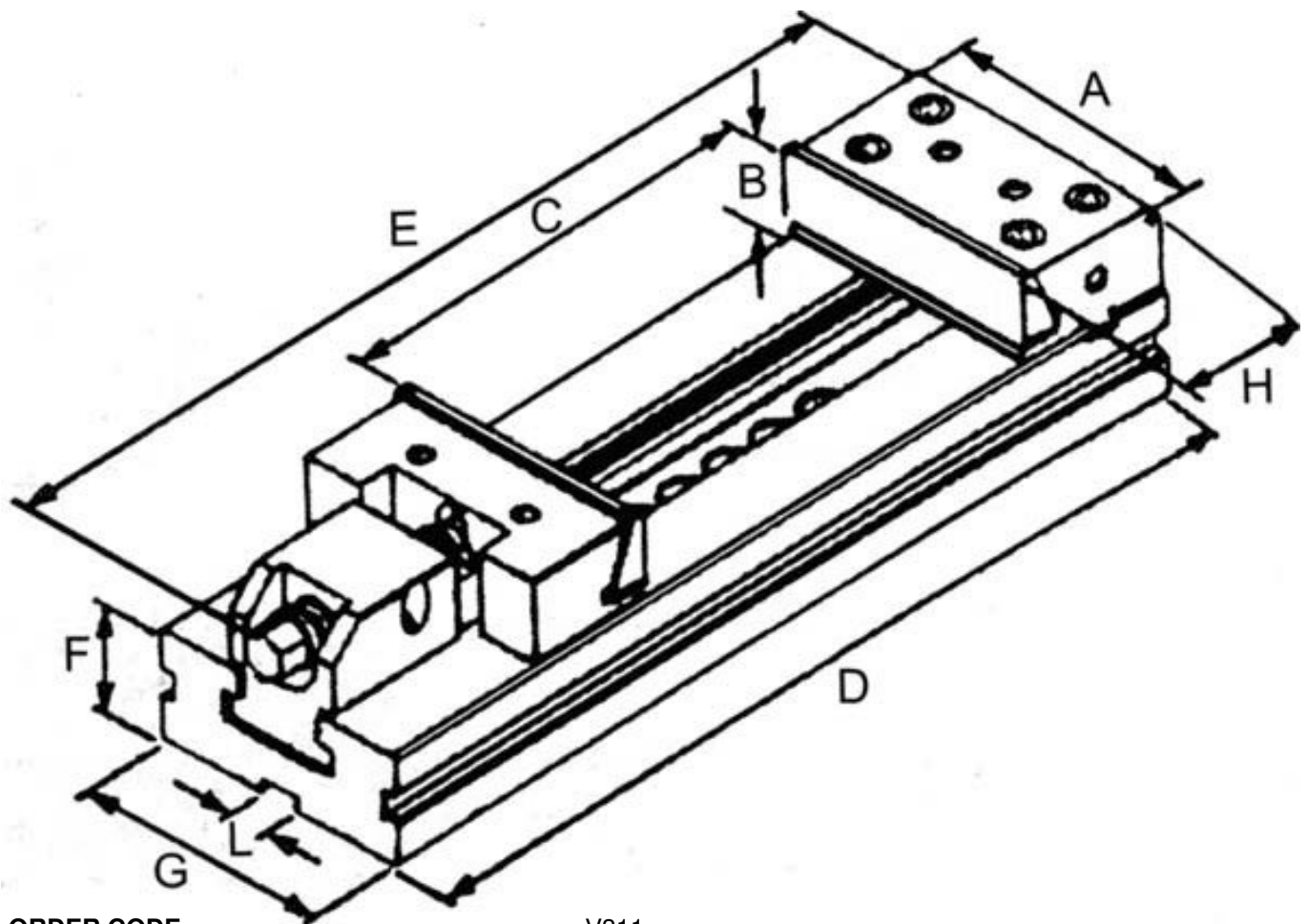
### Description

Toolmaster vices are manufactured under rigid quality control. All Toolmaster vices are interchangeable and can be used as matched pairs.

### Features

- Hardened and ground steel to HRC60, with high precision
- Keyways are 16mm H7 and are toleranced giving perfect alignment and reducing set up time
- Space saving design allows for maximum use of clamping area

### Specifications



ORDER CODE	V311
A - Jaw Width (mm)	152
C - Jaw Opening (mm)	200
B - Jaw Height (mm)	50
D (mm)	420
E (mm)	500
F (mm)	50
G (mm)	125
H (mm)	90
Nett Weight (kg)	30

**TOOLMASTER Modular Machine Vice**