



TOOLMASTER

BT30 x ER16-60 Collet Chuck

Ø0.5-Ø10mm Range



TOOLMASTER BT30 x ER16-60 Collet Chuck

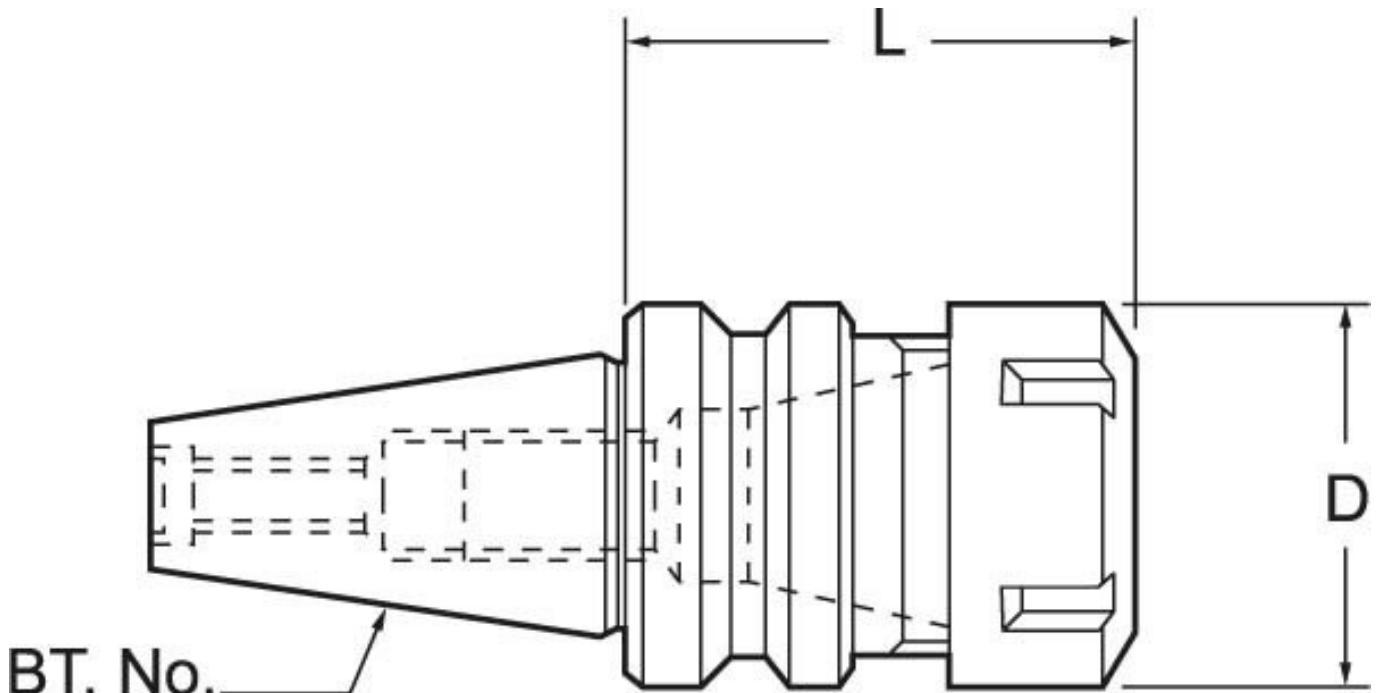
Description

All BT collet chucks meet the specifications of machine tool builders (DIN 2080 taper Shank Grade AT-3 - 85% taper contact)

Features

- Precision ground
- Manufactured to MAS403BT30 standard
- M12 Pull Stud thread
- 70mm extension from the gauge line
- Locking spanner not included

Specifications



BT. No.	
ORDER CODE	T331
MODEL	BT30 x ER16-60
Speed Rating (rpm)	10,000
Taper (BT)	BT30
Capacity (mm)	0.5 - 10
L (mm)	60
D (mm)	28
Collet Type (ER)	ER16
Nett Weight (kg)	0.8