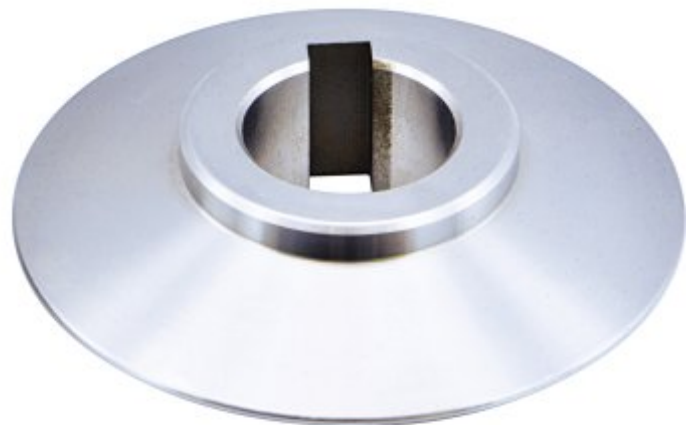


METALMASTER MBR-SAWR



Steel Artwork Bead Roller Set

Ø64mm x 33mm Wide



METALMASTER Steel Artwork Bead Roller Set MBR-SAWR



Description

These Steel Rollers are used mostly for artwork, particularly in softer material such as aluminium. They have small contact points which makes it great for adding detail to artwork pieces or other decorative work.

Features

- Ø64mm Roller set made from Steel
- 33mm Width
- Great for detail work in tight areas

Specifications

ORDER CODE	S6342
MODEL	MBR-SAWR
Part Number	~
Type	Steel Artwork Roller Set
Size (inch / mm)	33mm Width
Roller Diameter (mm)	Ø64
Bore Diameter (mm)	Ø20 with Keyway
Spigot Diameter (mm)	~
Shaft Diameter	~
Capacity (Mild Steel) (mm / Gauge)	1.2 / 18
Material (Type)	Steel
Suits	MBR-610 & MBR-1070 Bead Rollers