

**MEASUMAX 40-406**

**SPC Interface Software and Cable**

**2m**



**MeasumaX**



**MEASUMAX SPC Interface Software and Cable 40-406**

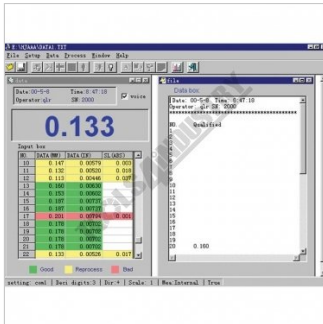


Figure 1

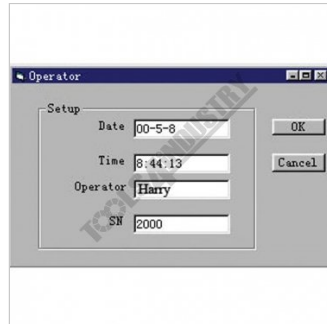


Figure 2

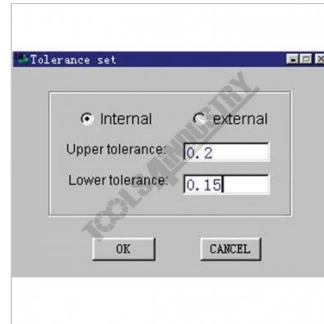


Figure 3

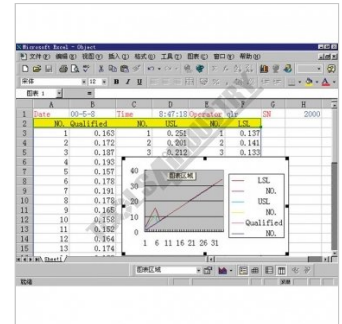


Figure 4

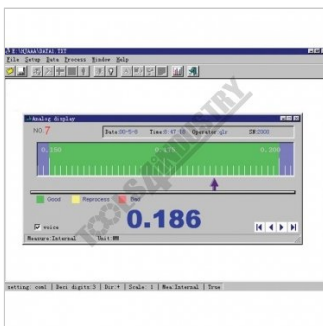


Figure 5

**Description**

**SPC INTERFACE SOFTWARE AND CABLE Q406 (40-406)**

Used to transfer data from micrometer, verniers, digital indicators and other equipment. Software supplied with each cable.

**COMPUTER INTERFACE SOFTWARE**

Measumax digital RS-232 option, allows for the interface of certain instruments with a computer using the RS232 port of a computer. A software program is then required (such as Microsoft Hyper Terminal) to arrange the data.

**About the program**

The Measumax SPC system is a fast and easy to use data transfer system, with statistical analysing for every quality control situation. It is designed to be used by both experts and novices alike.

Easy to use is one of the key features of the SPC data transfer system. With just a few clicks of the mouse you are ready to enter the data (Fig 1).

The program allows you to record the name of the operator, the serial number of the instrument and the date and time the readings took place (Fig 2). Also, you can enter an upper and lower limit for the audible warning and recording of the data entered to the tolerance set (Fig 3).

A click of the mouse then transfers the data to an Excel spread sheet (Fig 4) and lists the results of those that qualified, those over the upper limit that need to be reworked, and those under the lower limit that will need to be rejected. In Excel the data can be transformed into graphs or other details for analysis.

In quality control situations where quick checking is required, a screen can be set showing a needle recording the data between the upper and lower limit for easy checking (Fig 5).

## MEASUMAX SPC Interface Software and Cable 40-406

### System Requirements

IBM system for Windows 2000 or Later

### Specifications

<b>ORDER CODE</b>	Q406
<b>Length (Metre)</b>	2
<b>Includes</b>	Software
<b>Suits</b>	Q220, Q221, Q2205