

SUNRISE



17.2 x 26.2mm Slotted Die

Hi -Grade Tool Steel Imported From Japan



SUNRISE 17.2 x 26.2mm Slotted Die

Bottom View

Description

Punch and Dies are Manufactured by Sunrise in Taiwan using Hi -Grade Tool Steel imported from Japan.

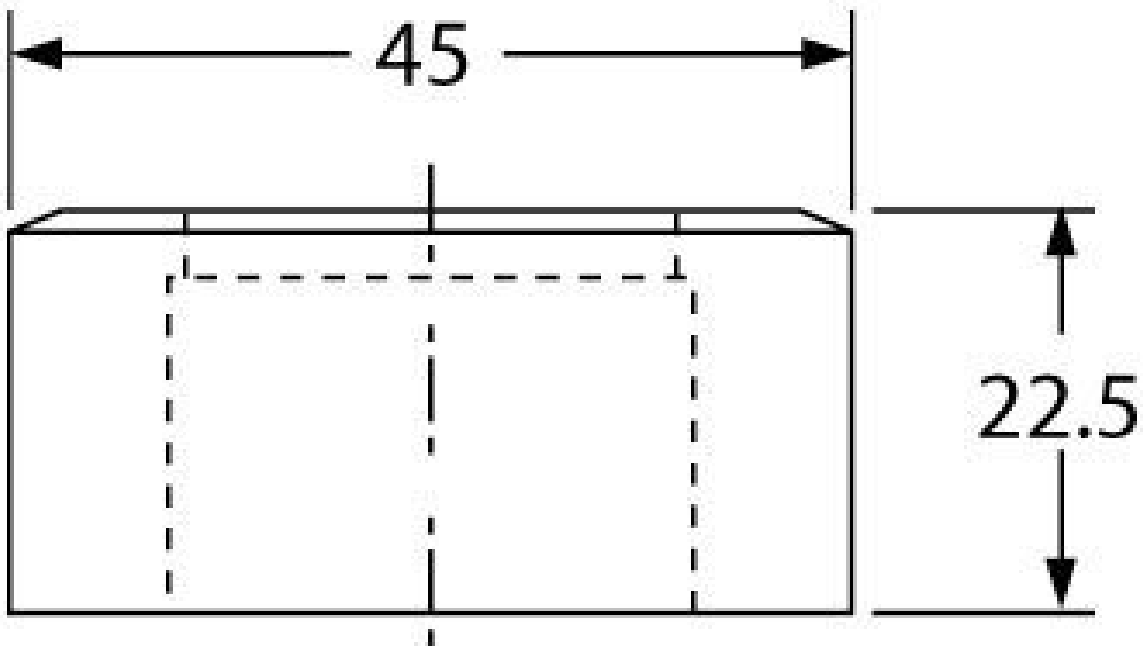
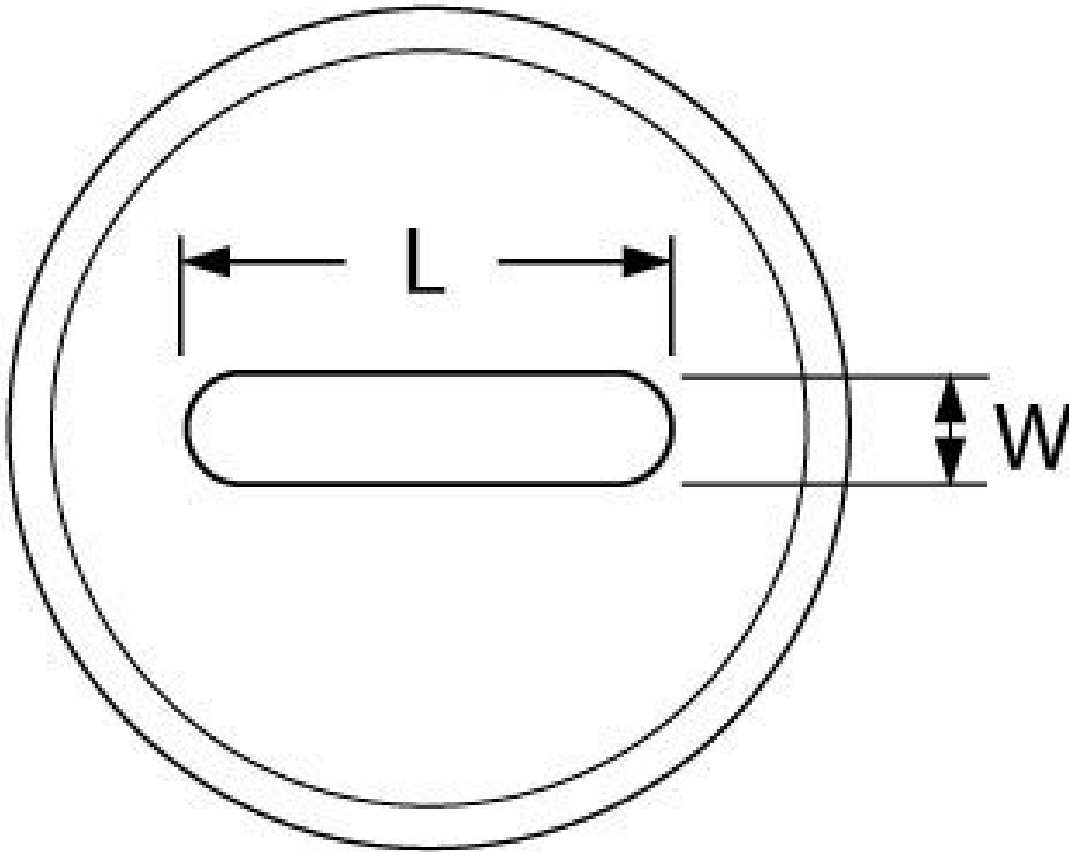
The manufacturing process involves machining via hi tech CNC machines lathes & mills, vacuum heat treatment with multiple tempering at high temperatures before a final quality inspection/testing process all of which ensures an accurate, precise, durable & stable product.

Features

- PLEASE NOTE FOLLOWING RECOMMENDATIONS WHEN SELECTING DIE CLEARANCE:
- Material Thickness - 2 ~ 4mm = Die Clearance 0.2mm
- Material Thickness - 4 ~ 9.5mm = Die Clearance 0.7mm
- Material Thickness - 10 ~ 14.5mm = Die Clearance 1.2mm
- Material Thickness - 15 ~ 19.5mm = Die Clearance 1.7mm
- Material Thickness - 20 ~ 24mm = Die Clearance 2.2mm

Specifications

SUNRISE 17.2 x 26.2mm Slotted Die



SUNRISE 17.2 x 26.2mm Slotted Die

ORDER CODE

SUNRISE 17.2 x 26.2mm Slotted Die

P6127

Shape - Type	Slotted Die - 0D1
Square or Slot Hole Size (W x L) (mm)	17.2 x 26.2
Punch Locating Diameter x Length (mm)	~
Die Outside Body Diameter x Height (mm)	Ø45 x 22.5mm