

# METALMASTER HP-150T



## Industrial Hydraulic Press - 150 Tonne



## METALMASTER Industrial Hydraulic Press - 150 Tonne HP-150T



Front View



Left View



Hydraulic Ram



Controls



Control Panel



Table Pins



Pin Safety Clip



V Blocks On Table

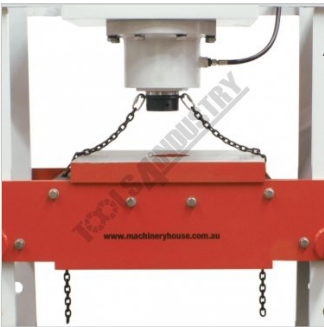
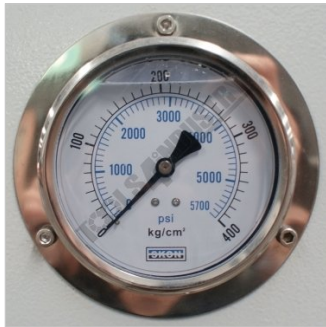


Table Lifting Chain



Lifting Parts For Table Height Adjustment



Pressure Gauge



Isolation Switch

TON	10	20	30	40	50	60	70
kg	20	40	60	80	100	120	140
TON	80	90	100	110	120	130	150
kg	160	180	205	225	245	265	300

Chart

## METALMASTER Industrial Hydraulic Press - 150 Tonne HP-150T

### Description

150 Tonne Industrial Hydraulic Press

Suited for the Industrial workshop, for pressing of bearings, bushings & straightening shafts, bending steel as well has all general pressing applications

### Features

- Easy to use and powerful press for most applications
- Ideal for the repair of axles, shafts, & press fit of bearings & bushings
- Ram speed down 5.0mm/sec, returns 6.4mm/sec
- Heavy duty welded steel fabricated frame
- Strong hydraulic cylinder ensures precise pressing during operation
- Fitted with pressure gauge
- Safety overload valve
- Hydraulic joystick control lever
- Powerful TEFC motor
- Heavy duty one piece table plate insert
- Extra heavy duty table support with high tensile setting pins
- Table can be adjusted for height using chains and Hydraulic ram
- Pre-Commissioning:
  1. Press is run & tested prior delivery
  2. Hydraulic oil is included with machine

### Includes

- Includes support plate & V blocks

### Specifications

<b>ORDER CODE</b>	P404
<b>MODEL</b>	HP-150T
<b>Pressing Capacity (Tonne)</b>	150
<b>Hydraulic Ram Operation (Type)</b>	Motorised System
<b>Sliding Ram (left-right) (Yes / No)</b>	No
<b>Width Between Front Posts (mm)</b>	1100
<b>Width Between Side Posts (mm)</b>	400
<b>Table Top Opening - (Front to Back) (mm)</b>	465
<b>Ram To Table (Max.) (mm)</b>	900
<b>Cylinder Stroke (mm)</b>	390
<b>Ram Diameter (mm)</b>	Ø130
<b>Piston Diameter (mm)</b>	~
<b>Minimum Air Flow Rate required (L/Min)</b>	~
<b>Motor Power (kW / hp)</b>	7.5 / 10
<b>Voltage (V)</b>	415
<b>Floor Space (W x D x H) (mm)</b>	2020 x 1120 x 2160
<b>Nett Weight (kg)</b>	1950