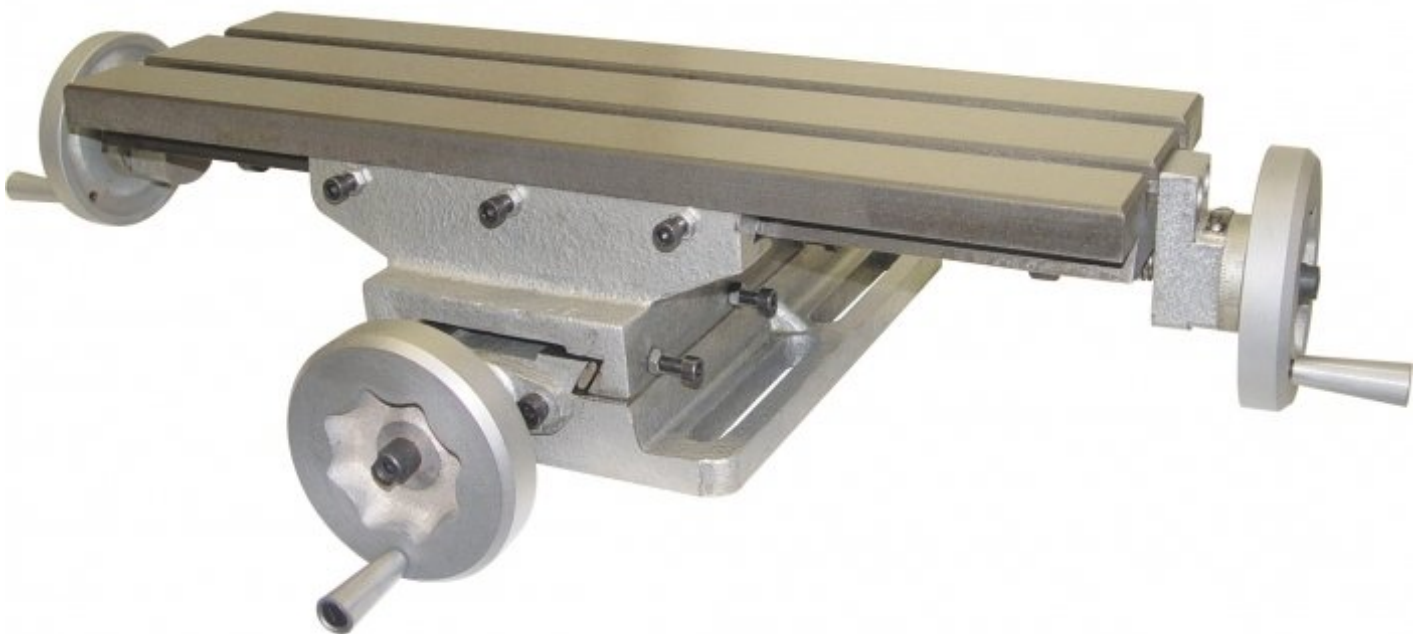


**HAFCO SCT-155**



**Compound Table**

**290 x 177mm Table Travel**



## HAFCO Compound Table SCT-155

### Features

- Manufactured from cast iron

### Specifications

|                                 |           |
|---------------------------------|-----------|
| <b>ORDER CODE</b>               | M198      |
| <b>MODEL</b>                    | SCT-155   |
| <b>Table Size (mm)</b>          | 470 x 155 |
| <b>Longitudinal Travel (mm)</b> | 290       |
| <b>Cross Travel (mm)</b>        | 177       |
| <b>Tee Slots (mm)</b>           | 2 x 12    |
| <b>Height (mm)</b>              | 130       |
| <b>Hand Wheel Graduation</b>    | 0.001"    |
| <b>Nett Weight (kg)</b>         | 28        |