

TOOLMASTER CTGPL-1212-F11

Left Hand Turning Tool Holder

12mm Tool Height



TOOLMASTER Left Hand Turning Tool Holder CTGPL-1212-F11

Description

Quality Tipped Tool Holders ISO Standard to suit Tungsten Carbide Indexable Insert Tips.

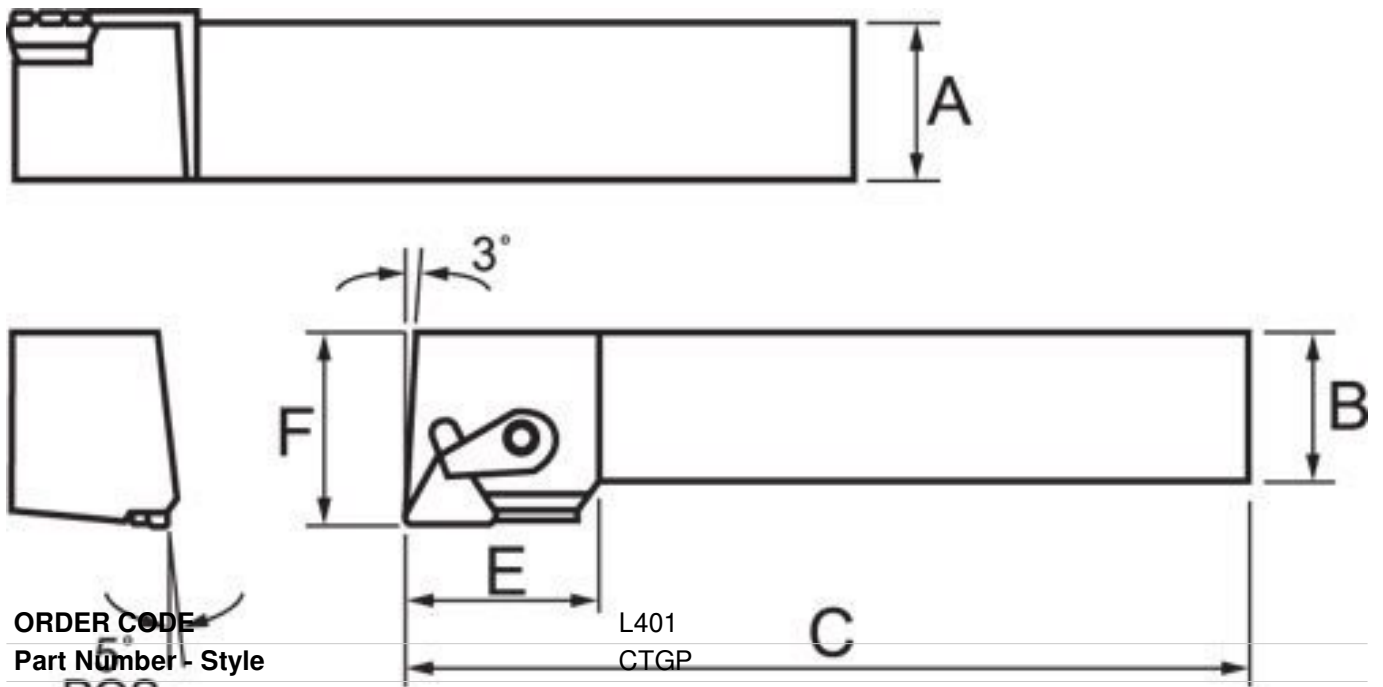
NOTE: Inserts not included with tool holders

Use insert TPMPR 110304 (L061)

Features

- Positive rake turning tool holder with 90° approach angle
- Suitable for heavy duty cutting
- Left hand tool holder suitable for facing operations

Specifications



ORDER CODE	L401
Part Number - Style	CTGP
Tool Height Size (mm)	12
Clamping Method of Insert	~
Category	~
Connection style	~
Back End Size	~
Application	~
Hand Type	Left
Holder Style	~
Clearance Angle	~
Insert Type	TPMR11
A (H) (mm)	12
B (mm)	12
C (LF) (mm)	80
LH (mm)	~
F (WF) (mm)	16

TOOLMASTER Left Hand Turning Tool Holder CTGPL-1212-F11

E (mm)	20
---------------	----
