



**TOOLMASTER**

**Centre Drill Holder**

**25 x Ø10mm**



**TOOLMASTER Centre Drill Holder**



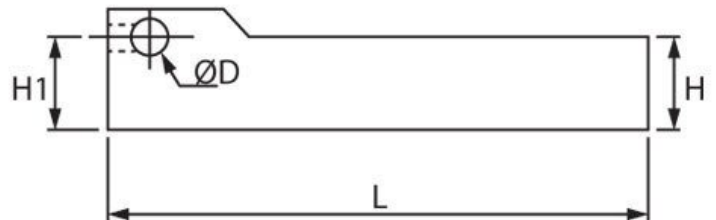
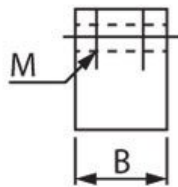
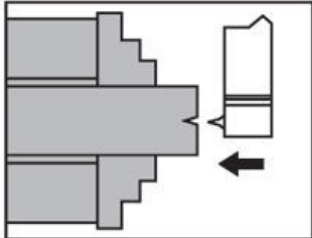
Head Screws

**Description**

Toolpost Centre Drill Holder. Used on CNC machines where clearance is a problem, and on long bed lathes where moving the tailstock long distances is uneconomical.

NOTE: HSS Tool bits not supplied (uses D504)

**Specifications**



<b>ORDER CODE</b>	L391
<b>D (mm)</b>	10
<b>L (mm)</b>	150
<b>H (mm)</b>	25
<b>H1 (mm)</b>	25
<b>B (mm)</b>	25
<b>M (mm)</b>	2 x M8