

TOOLMASTER



Centre Drill Holder

20 x Ø10mm



TOOLMASTER Centre Drill Holder



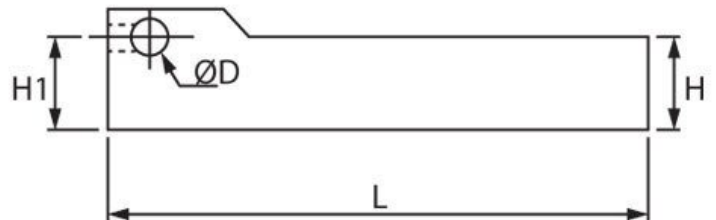
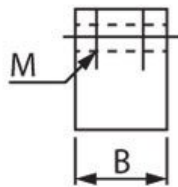
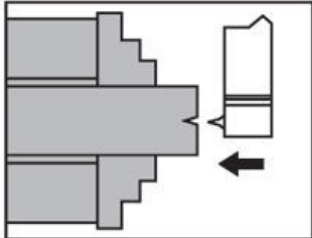
Head Screws

Description

Toolpost Centre Drill Holder. Used on CNC machines where clearance is a problem, and on long bed lathes where moving the tailstock long distances is uneconomical.

NOTE: HSS Tool bits not supplied (uses D504)

Specifications



ORDER CODE	L390
D (mm)	10
L (mm)	125
H (mm)	20
H1 (mm)	20
B (mm)	20
M (mm)	2 x M8