

HAFCO RSS-4WS



Industrial Steel Shelving Plus 2 Drawer Unit Package Deal

364kg Shelf Load Capacity



HAFCO Industrial Steel Shelving Plus 2 Drawer Unit Package Deal RSS-4WS



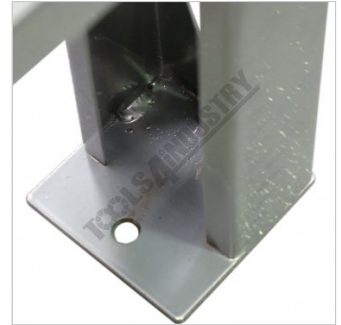
External Shelf Locking System



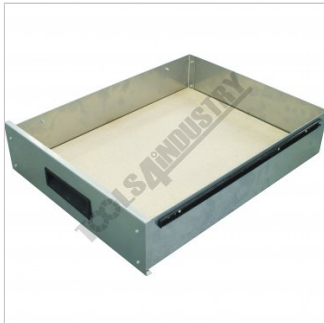
Internal Shelf Locking Wedge Type System



Shelf Wire Mesh



Foot Post with Bolt Down Provisions



Drawer



Shown Mounted to Racking with Drawers Closed



Shown with Drawers Closed



Ball Bearing Slides



Shown Mounted to Racking with Drawer Open

Description

Industrial steel shelving which is supplied in bays 1955mm (L) x 610mm (W) x 1830mm (H) with a silver corrosive resistant powder coated finish.

Each bay consists of four levels with wire mesh inserts, each shelf has a capacity of 364kg. The vertical posts have provision to adapt an optional racking extensions (S014A) to double the storage. The shelf rails are secured in position and locked in via a wedge system. Simply very easy to assemble without the use of any tools.

HAFCO Industrial Steel Shelving Plus 2 Drawer Unit Package Deal RSS-4WS

Features

- RSS-4WS - Industrial Steel Shelving - (S014)
- 364kg capacity per shelf
- Industrial 4 shelves with reinforced steel wire grid pattern mesh
- Adjustable shelf height position with interlocking tabs
- Silver corrosive resistant powder coated finish
- Vertical posts have double sided punched holes to connect optional extension bay
- Vertical posts are 64 x 38 x 1.6mm heavy duty C-section
- Cross member supports for wire mesh are 70 x 18 x 1.6mm heavy duty C-section
- Strengthening side supports are 40 x 18 x 1.4mm C-section
- 1955 x 610 x 1830mm (LxWxH) assembled dimensions

- RSS-2D - 2 x Drawer System - Suits Industrial Steel Shelving - (S014D)
- 2 x 412 x 540 x 110mm drawers - (WxDxH)
- 880mm total width drawer system
- 30kg load capacity per drawer
- Ball bearing slides with de-tent lock
- Particle board drawer base
- Flush mounted drawer handles

Specifications

ORDER CODE	K234
MODEL	RSS-4WS + RSS-2D Package
Type	Industrial Steel Shelving + 2 Drawer Unit
Drawer Load Capacity (kg)	30
Shelf Load Capacity (kg)	364
Total Combined Load Capacity (kg)	~
Parts Bin Load Capacity Each (kg)	~
Buckets / Bins Total Quantity (No.)	~
Buckets / Bins Dividers Quantity (No.)	~
Maximum Total Load Capacity (kg)	~
Buckets / Bins A: Quantity / Size (mm)	~
Buckets / Bins B: Quantity / Size (mm)	~
Buckets / Bins C: Quantity / Size (mm)	~
Buckets / Bins D: Quantity / Size (mm)	~
Dimensions (W x D x H) (mm)	1955 x 610 x 1830
Nett Weight (kg)	66.5