

**HAFCO RSS-4WS**



**Industrial Steel Shelving Plus Extension Package Deal**

**364kg Shelf Load Capacity**



## HAFCO Industrial Steel Shelving Plus Extension Package Deal RSS-4WS



RSS-4WS Industrial Shelving



RSS-4WSA - Industrial Steel Shelving Extension



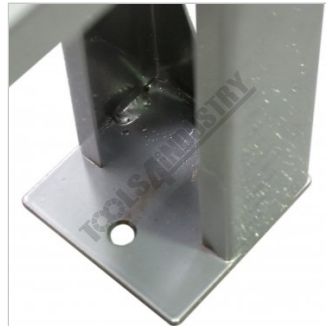
External Shelf Locking System



Internal Shelf Locking Wedge Type System



Shelf Wire Mesh



Foot Post with Bolt Down Provisions

### Description

Industrial steel shelving which is supplied in bays 1955mm (L) x 610mm (W) x 1830mm (H) with a silver corrosive resistant powder coated finish.

Each bay consists of four levels with wire mesh inserts, each shelf has a capacity of 364kg. The vertical posts have provision to adapt an optional racking extensions (S014A) to double the storage. The shelf rails are secured in position and locked in via a wedge system. Simply very easy to assemble without the use of any tools.

### Features

- RSS-4WS - Industrial Steel Shelving - (S014)
  - 364kg capacity per shelf
  - Industrial 4 shelves with reinforced steel wire grid pattern mesh
  - Adjustable shelf height position with interlocking tabs
  - Silver corrosive resistant powder coated finish
  - Vertical posts have double sided punched holes to connect optional extension bay
  - Vertical posts are 64 x 38 x 1.6mm heavy duty C-section
  - Cross member supports for wire mesh are 70 x 18 x 1.6mm heavy duty C-section
  - Strengthening side supports are 40 x 18 x 1.4mm C-section
  - 1955 x 610 x 1830mm (LxWxH) assembled dimensions
- 
- RSS-4WSA - Industrial Steel Shelving Extension - (S014A)
  - 364kg per shelf capacity when attached to RSS-4WS shelving
  - Industrial 4 shelves with reinforced steel wire grid pattern mesh
  - Adjustable shelf height position with interlocking tabs

## HAFCO Industrial Steel Shelving Plus Extension Package Deal RSS-4WS

- Silver corrosive resistant powder coated finish
- Vertical post has double sided punched holes to connect optional extension bay
- Vertical post is 64 x 38 x 1.6mm heavy duty C-section
- Cross member supports for wire mesh are 70 x 18 x 1.6mm heavy duty C-section
- Strengthening side supports are 40 x 18 x 1.4mm C-section
- 1923 x 610 x 1830mm (LxWxH) assembled dimensions

### Specifications

<b>ORDER CODE</b>	K232
<b>MODEL</b>	RSS-4WS + RSS-4WSA Package
<b>Type</b>	Industrial Steel Shelving
<b>Drawer Load Capacity (kg)</b>	~
<b>Shelf Load Capacity (kg)</b>	364
<b>Total Combined Load Capacity (kg)</b>	~
<b>Parts Bin Load Capacity Each (kg)</b>	~
<b>Buckets / Bins Total Quantity (No.)</b>	~
<b>Buckets / Bins Dividers Quantity (No.)</b>	~
<b>Maximum Total Load Capacity (kg)</b>	~
<b>Buckets / Bins A: Quantity / Size (mm)</b>	~
<b>Buckets / Bins B: Quantity / Size (mm)</b>	~
<b>Buckets / Bins C: Quantity / Size (mm)</b>	~
<b>Buckets / Bins D: Quantity / Size (mm)</b>	~
<b>Dimensions (W x D x H) (mm)</b>	3878 x 610 x 1830
<b>Nett Weight (kg)</b>	103