

CARNIVORE MB-210



Meat & Bone Bench Band Saw - Stainless Steel

Slide Out Bottom Tray To Catch Blade Off Cut Meat Shavings



CARNIVORE Meat & Bone Bench Band Saw - Stainless Steel MB-210



Front View



Left View



Rear View



Right View



Top View



Top View Guard Up



Side View



Side View Guard Up



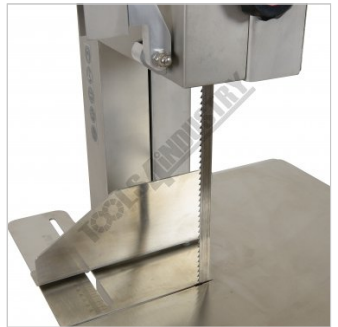
Blade Guard Up



Power Switch



Blade Guard Down



Adjustable Length Stop Guide



Table



Length Stop Guide



Length Stop Graduations



Bottom Tray

CARNIVORE Meat & Bone Bench Band Saw - Stainless Steel MB-210



Blade Tension Handle



Blade Guard Door Handle



Side View With Blade Guard Open



Top Blade Wheel



Bottom Blade Wheel



Bottom Blade Wheel Setup



Safety Micro on Blade Guard



Stainless Steel Feet

Description

Let's just cut right into it, the MB-210 Carnivore Meat & Bone Band saw is a must-have machine to help speed up the butchering process for your restaurant, farm or home kitchen or anywhere you need to process large cuts of meat.

This powerful, heavy duty meat band saw slices through meat and bone like a knife through butter. Even the toughest cuts of meat and the hard bones are no match for this machine when using our top-quality band saw blades.

Made from high quality food grade stainless steel and powered by a 750-watt 240V motor, its construction is extremely durable and reliable. Another feature and user-friendly design is that changing the blade is very quick & simple unlike other models in the market.

So, if you have been looking for a heavy-duty meat band saw that you can count on- look no further than the MB-210 Carnivore Meat & Bone Saw. This incredible band saw machine is the only meat & bone saw that you'll ever need!

Features

- Perfect for the restaurant, farmer or home butcher
- High quality food grade stainless steel construction for superior hygiene
- Good size table area 440 x 465mm (WxD)
- 185mm throat depth x 240mm height capacity
- Adjustable cut length stop guide from 0 to 165mm wide
- Slide out bottom tray to catch blade off cut meat shavings
- Bottom blade wheel wiper to clean meat shavings of the drive wheel
- Top & bottom blade wipers to clean meat shavings of the blade
- Swivel safety blade guard with push handle to keep hands clear from the cutting blade
- Hinged door fitted with safety micro cut out switch

CARNIVORE Meat & Bone Bench Band Saw - Stainless Steel MB-210

- 4 x stainless steel stabilising feet
- 0.75kW/1hp, 240V motor

Specifications

ORDER CODE	F320
MODEL	MB-210
Type	Meat & Bone Saw Stainless Steel
Capacity	185 x 240mm
Band Saw Blade Size (L x W x T) (mm)	1650 x 13
Band Saw Blade Code	F320A & F320B
Motor Power (kW / hp)	0.75 / 1
Voltage (V)	240
Nett Weight (kg)	55