

TOOLMASTER CHR 40-4MT

Boring Sleeve - Straight

Suits CNC Lathes



TOOLMASTER Boring Sleeve - Straight CHR 40-4MT

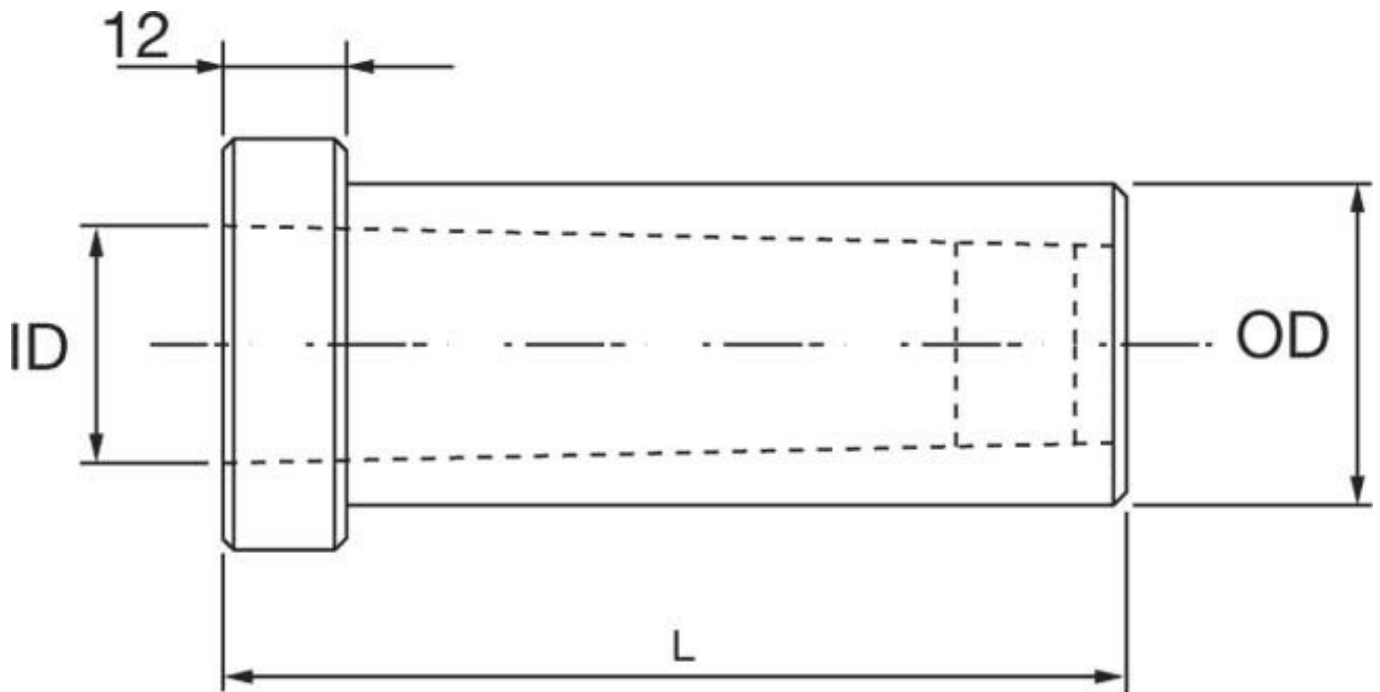
Description

Used in the turrets of CNC lathes to hold morse taper drills.
 Universal design allows these sleeves to be fitted to all CNC machines with turrets

Features

- Precision ground inside and out
- Clamping Flat for clamping the sleeve into the turret
- Drive slot for the tang of the taper shank drill

Specifications



ORDER CODE	D8294
MODEL	CHR 40-4MT
Type	Plain
OD (mm)	40
ID (mm)	4MT
L (mm)	88
L1 (mm)	~