

**TOOLMASTER CHR 40-3MT**

**Boring Sleeve - Straight**

**Suits CNC Lathes**



## TOOLMASTER Boring Sleeve - Straight CHR 40-3MT

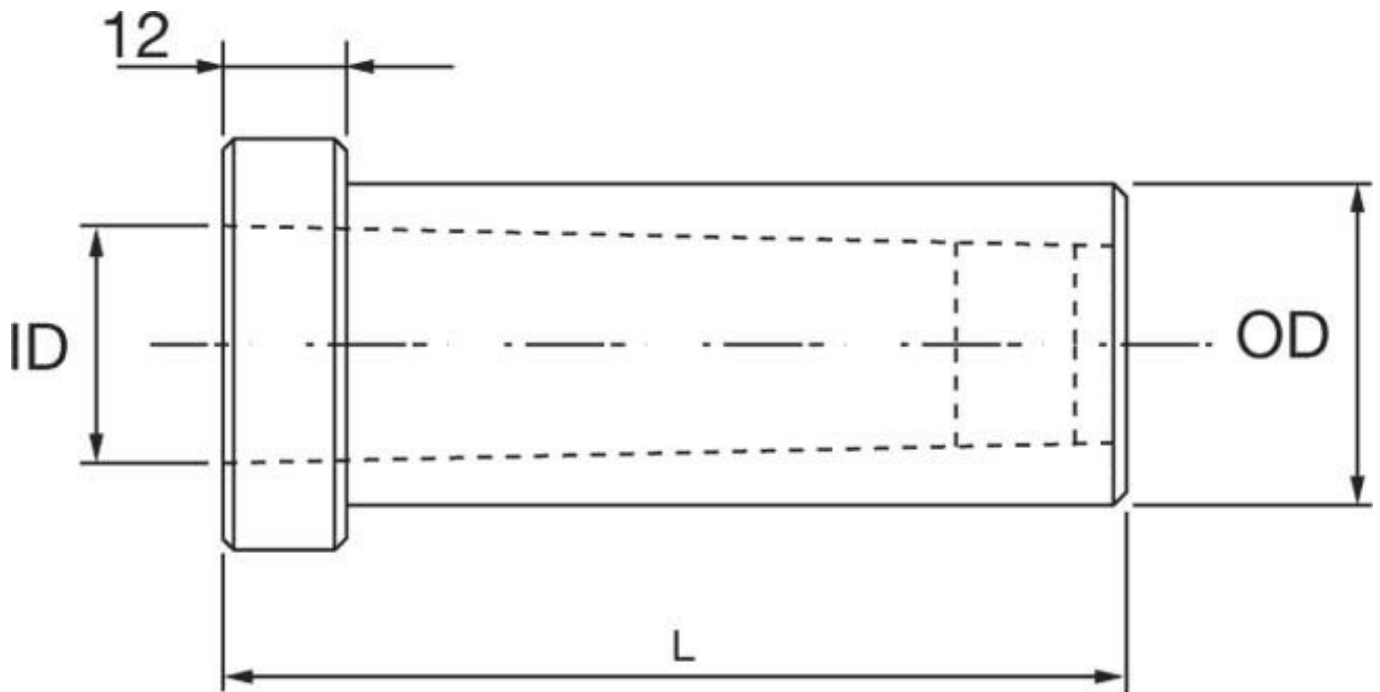
### Description

Used in the turrets of CNC lathes to hold morse taper drills.  
 Universal design allows these sleeves to be fitted to all CNC machines with turrets

### Features

- Precision ground inside and out
- Clamping Flat for clamping the sleeve into the turret
- Drive slot for the tang of the taper shank drill

### Specifications



|            |            |
|------------|------------|
| ORDER CODE | D8293      |
| MODEL      | CHR 40-3MT |
| Type       | Plain      |
| OD (mm)    | 40         |
| ID (mm)    | 3MT        |
| L (mm)     | 88         |
| L1 (mm)    | ~          |