

**TOOLMASTER CHR 25-40**

**Boring Sleeve - Straight**

**Suits CNC Lathes**



## TOOLMASTER Boring Sleeve - Straight CHR 25-40

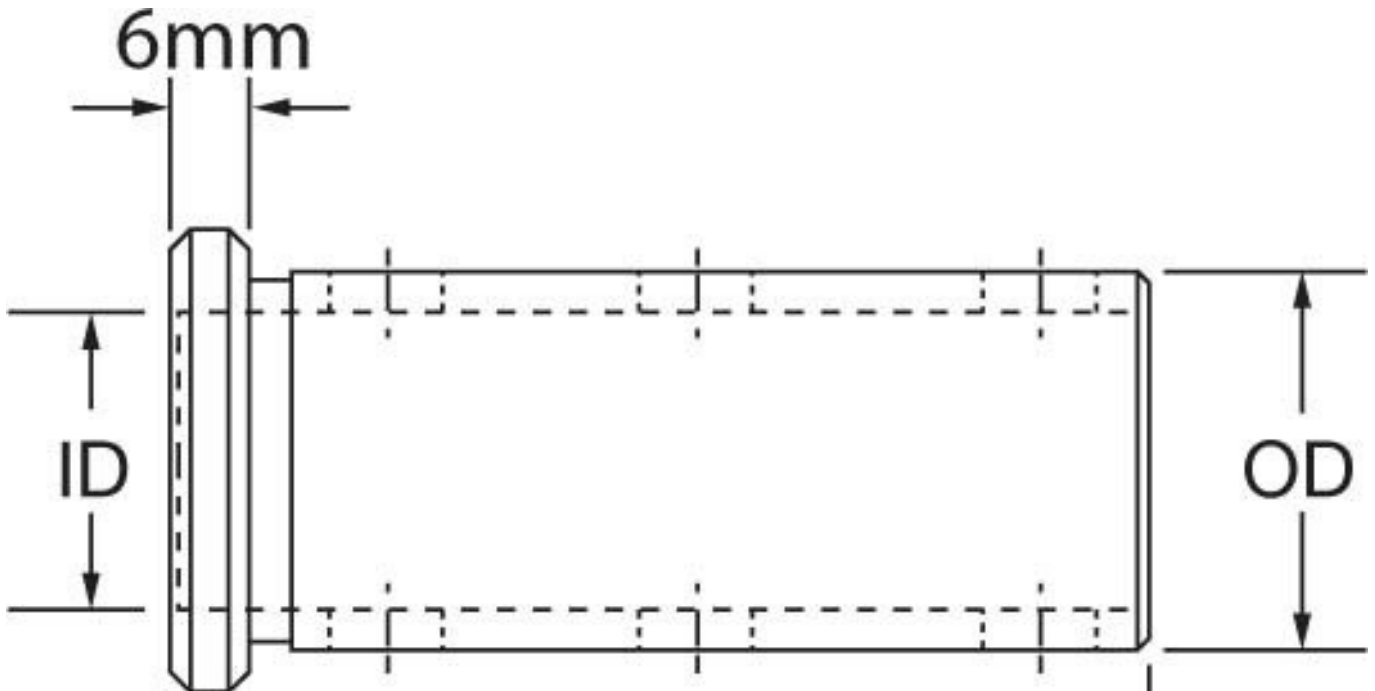
### Description

Used in the turrets of CNC lathes to hold boring bars and other cutting tools.  
 Universal design allows these sleeves to be fitted to all CNC machines with turrets

### Features

- Precision ground
- Clamping Flat for clamping the sleeve into the turret
- Recessed grub screws to clamp the item

### Specifications



ORDER CODE	D828
MODEL	CHR 25-40
Type	Set Screws
OD (mm)	40
ID (mm)	25mm
L (mm)	96
L1 (mm)	~