



TOOLMASTER

40 x 100 x ER32 Collet Chuck - Straight

Ø3-Ø26mm Range



TOOLMASTER 40 x 100 x ER32 Collet Chuck - Straight

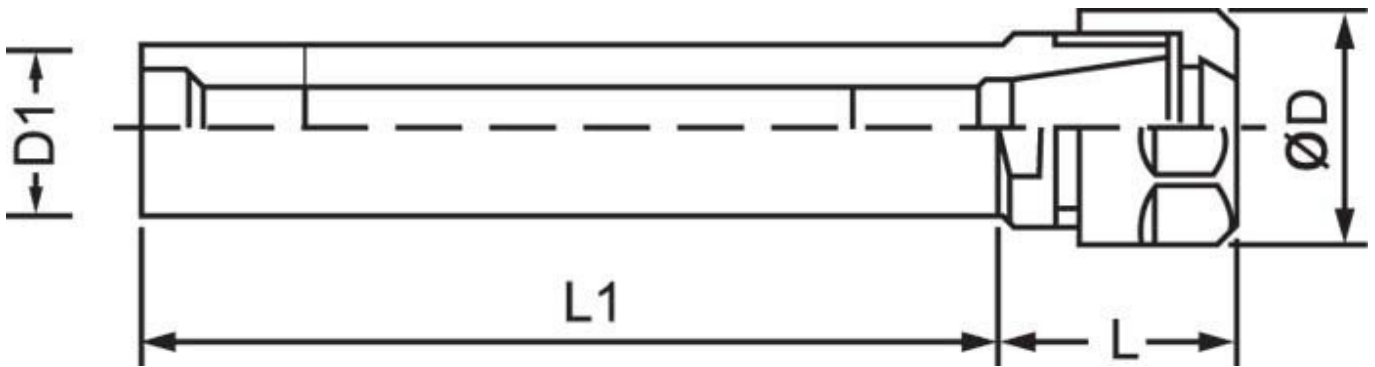
Description

Toolmaster Straight shanked ER collet chucks are suitable for applications such as turret work or can be used as an extension when a long reach is required
 Note: Spanner not included

Features

- Precision ground
- Clamping flat

Specifications



ORDER CODE	C930
MODEL	40 x 100 x ER32
Shoulder Type (Yes / No)	Yes
D (mm)	50
D1 (mm)	40
L (mm)	54
L1 (mm)	100
Nett Weight (kg)	1.2