

TOOLMASTER



25 x 150 x ER25 Collet Chuck - Straight

Ø1-Ø16mm Range



TOOLMASTER 25 x 150 x ER25 Collet Chuck - Straight

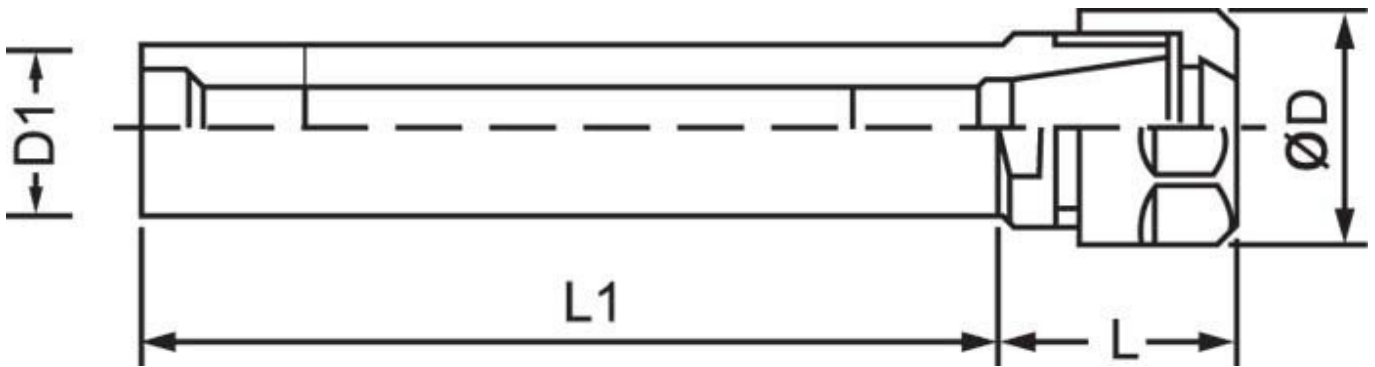
Description

Toolmaster Straight shanked ER collet chucks are suitable for applications such as turret work or can be used as an extension when a long reach is required
 Note: Spanner not included

Features

- Precision ground
- Clamping flat

Specifications



ORDER CODE	C864
MODEL	25 x 150 x ER25
Shoulder Type (Yes / No)	Yes
D (mm)	42
D1 (mm)	25
L (mm)	43
L1 (mm)	150
Nett Weight (kg)	0.78