



**TOOLMASTER**

**16 x 100 x ER16 Collet Chuck - Straight**

**Ø1-Ø10mm Range**



**TOOLMASTER 16 x 100 x ER16 Collet Chuck - Straight**

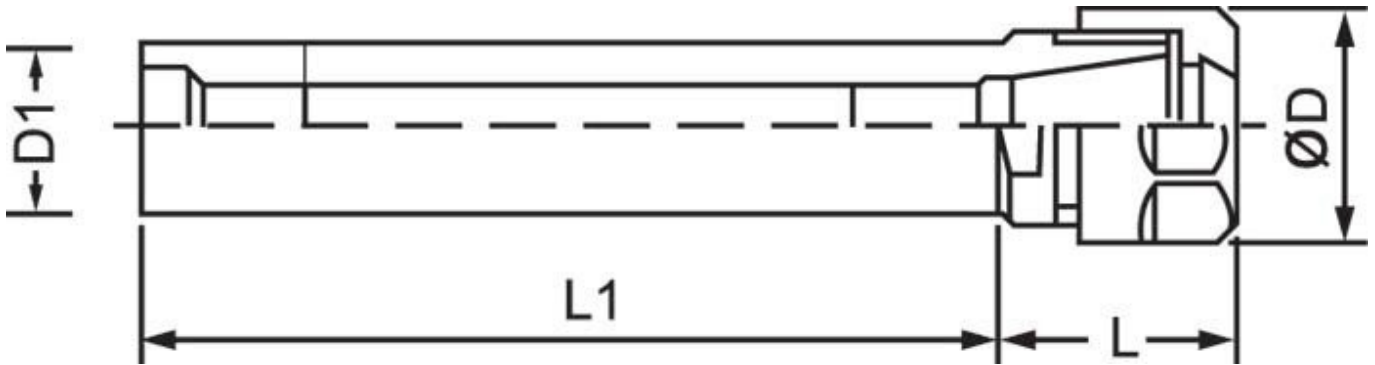
**Description**

Toolmaster Straight shanked ER collet chucks are suitable for applications such as turret work or can be used as an extension when a long reach is required  
 Note: Spanner not included

**Features**

- Precision ground
- Clamping flat

**Specifications**



<b>ORDER CODE</b>	C835
<b>MODEL</b>	16 x 100 x ER16
<b>Shoulder Type (Yes / No)</b>	Yes
<b>D (mm)</b>	28
<b>D1 (mm)</b>	16
<b>L (mm)</b>	30
<b>L1 (mm)</b>	100
<b>Nett Weight (kg)</b>	0.3