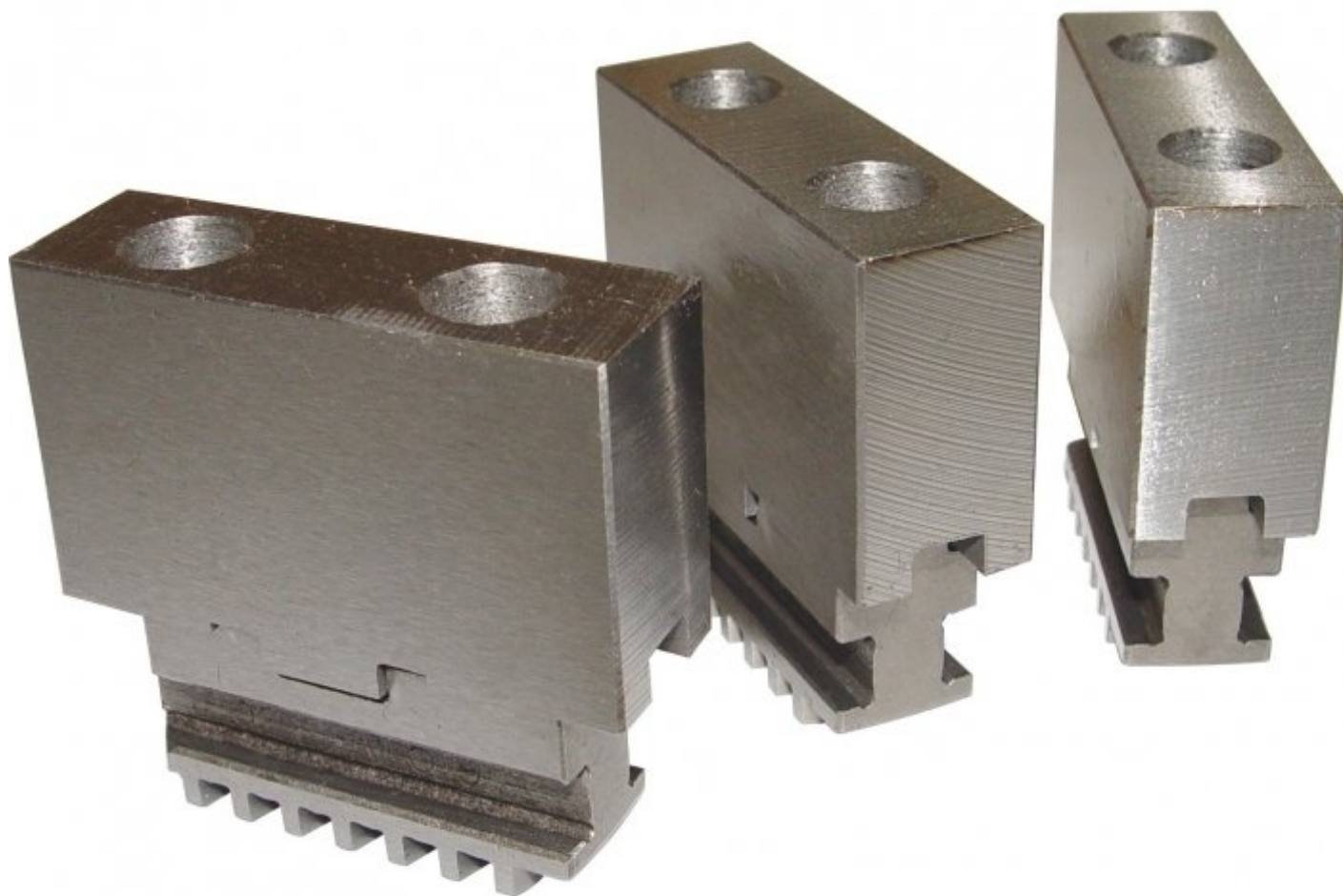




**TOOLMASTER**

**Soft Jaw & Base Set**

**Suit 500mm 3 Jaw Lathe Chuck**



**TOOLMASTER Soft Jaw & Base Set****Description**

Replaceable master base jaw with soft top jaw for Toolmaster K11 chucks.

Soft jaws can be machined and are normally used when high accuracy is required.

They can also be machined to hold odd shapes.

HOW TO.! For the best results bore the jaws as close as possible to the size of the material you are holding. This means the jaws must be clamped during the boring as close as possible to the pressure and size they will experience during use.

A lathe boring ring can be used to apply pressure to the jaws during machining.

**Features**

- Hard base jaw with soft top
- Set of 3

**Specifications**

<b>ORDER CODE</b>	C7711
<b>Suits Chuck Size (mm)</b>	Ø500