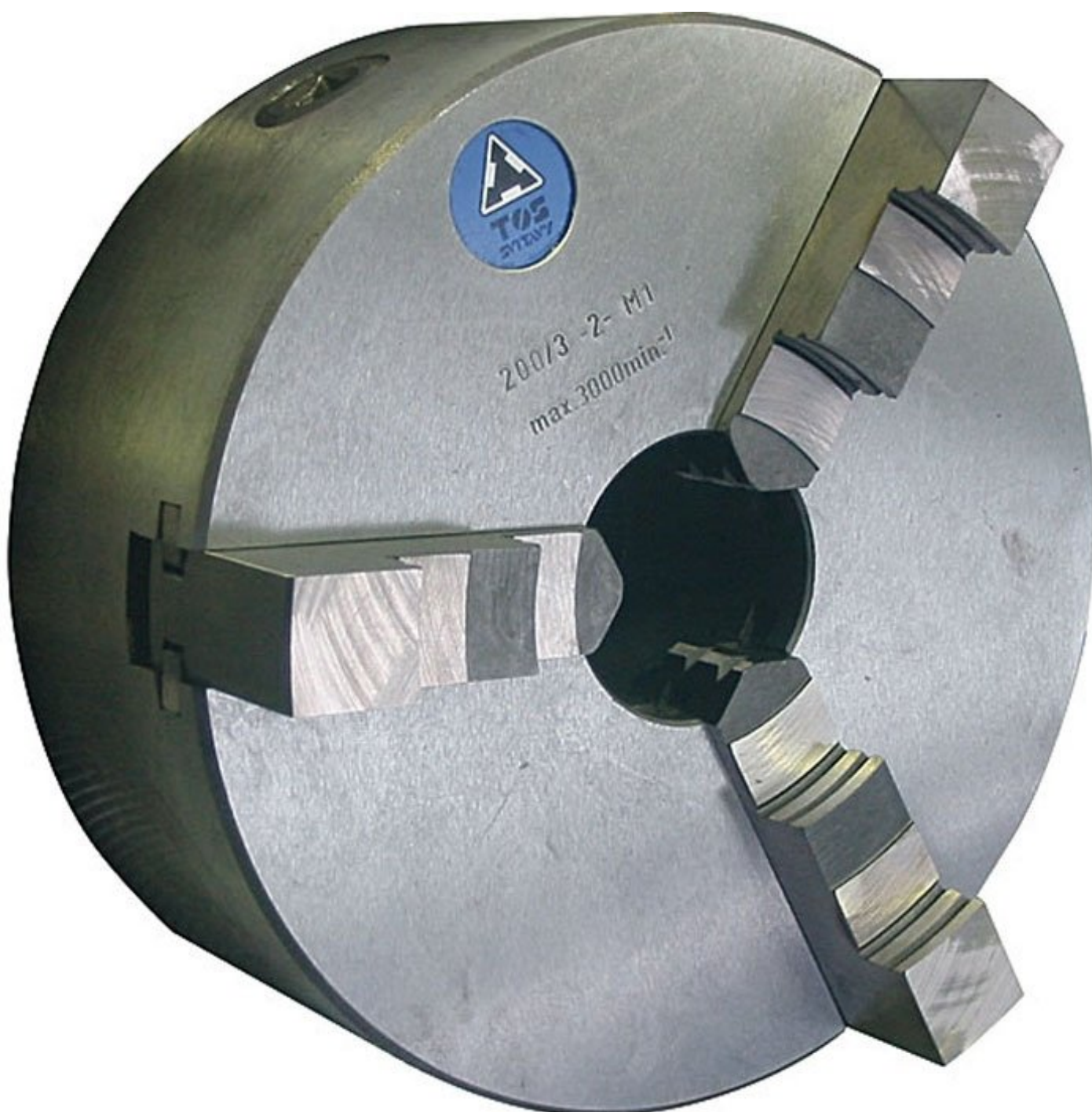


**TOS 315/ 3-2**



**3 Jaw Self Centring Lathe Chuck**

**Ø315mm**



**TOS 3 Jaw Self Centring Lathe Chuck 315/ 3-2**

Rear View

**Description**

PLEASE NOTE: Shop Soiled Stock Only

Direct mount design with camlock pins  
Manufactured in the Czech Republic

**Features**

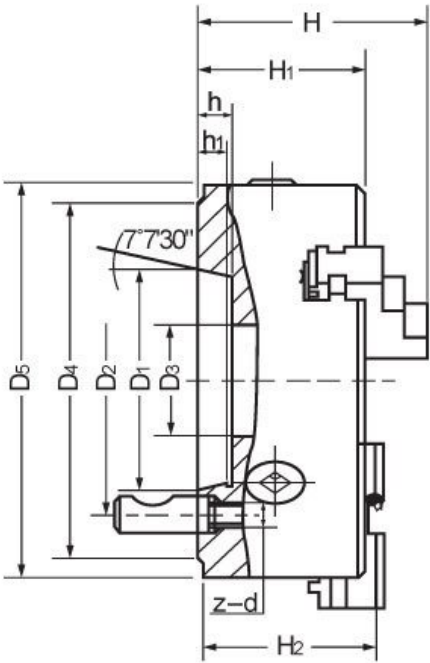
- The chuck body is manufactured from SG (Spheroidal Graphite) cast iron with the remaining parts manufactured from high strength heat-treated steel. This design feature ensures long service life and maintains high accuracy during use
- All chucks are supplied with a set of one-piece (IUS type) outside jaws and inside jaws, mounting screws and chuck key
- Available in two types of mount - Back Plate Mount and Camlock Mount

**Includes**

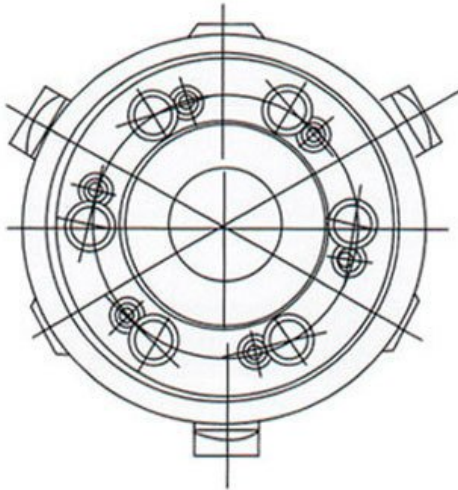
- Outside jaws
- Inside jaws
- Chuck key

**Specifications**

**TOS 3 Jaw Self Centring Lathe Chuck 315/ 3-2**



CAMLOCK



**TOS 3 Jaw Self Centring Lathe Chuck 315/ 3-2**

**ORDER CODE**

**TOS 3 Jaw Self Centring Lathe Chuck 315/ 3-2**

C747

<b>Chuck Size (mm)</b>	Ø315
<b>Camlock</b>	D1-8
<b>Outside Jaw (mm)</b>	~
<b>Inside Jaw (mm)</b>	~
<b>Speed (rpm)</b>	~
<b>D1 (mm)</b>	~
<b>D2 (mm)</b>	~
<b>D3 (mm)</b>	~
<b>H (mm)</b>	~
<b>H1 (mm)</b>	~
<b>h (mm)</b>	~
<b>Nett Weight (kg)</b>	~