

**AUTO STRONG KD-4-8**



**High Precision 3 Jaw Self Centring Lathe Chuck**

**Ø200mm**



**AUTO STRONG High Precision 3 Jaw Self Centring Lathe Chuck KD-4-8**



Rear View



Jaw



Jaw Rear View



Parts

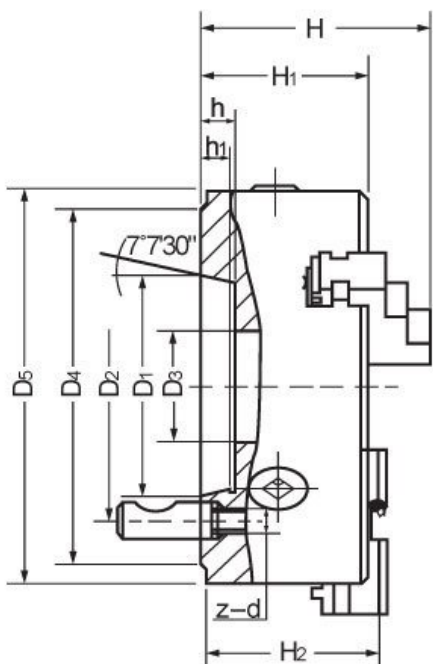
**Description**

Auto Strong are one of the world's leading manufacturers of lathe chucks. The KD Series, camlock direct mounting chucks are manufactured in Taiwan with a high precision gripping accuracy of 0.03mm and with a Meehanite casting body they are suitable for high-speed applications.

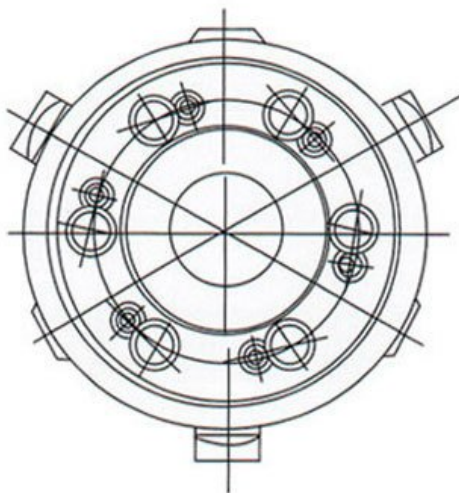
**Features**

- 3 Jaw self centering lathe chuck
- D1-4 Camlock direct mount
- High precision gripping accuracy of 0.03mm (0.0012") T.I.R
- 2 Piece hard jaws could be used as internal jaws and external jaws
- Meehanite chuck body suitable for high speed (Max. 2000rpm)
- Optional bolt on soft jaws are available, Order Code: C7019

**Specifications**



**CAMLOCK**



**AUTO STRONG High Precision 3 Jaw Self Centring Lathe Chuck KD-4-8**

**ORDER CODE**

**AUTO STRONG High Precision 3 Jaw Self Centring Lathe Chuck KD-4-8**

C7025

<b>Chuck Size (mm)</b>	Ø200
<b>Camlock</b>	D1-4
<b>Outside Jaw (mm)</b>	8-180
<b>Inside Jaw (mm)</b>	62-170
<b>Speed (rpm)</b>	2000
<b>D1 (mm)</b>	63.513
<b>D2 (mm)</b>	~
<b>D3 (mm)</b>	53
<b>H (mm)</b>	119.4
<b>H1 (mm)</b>	77.2
<b>h (mm)</b>	13
<b>Nett Weight (kg)</b>	18.5