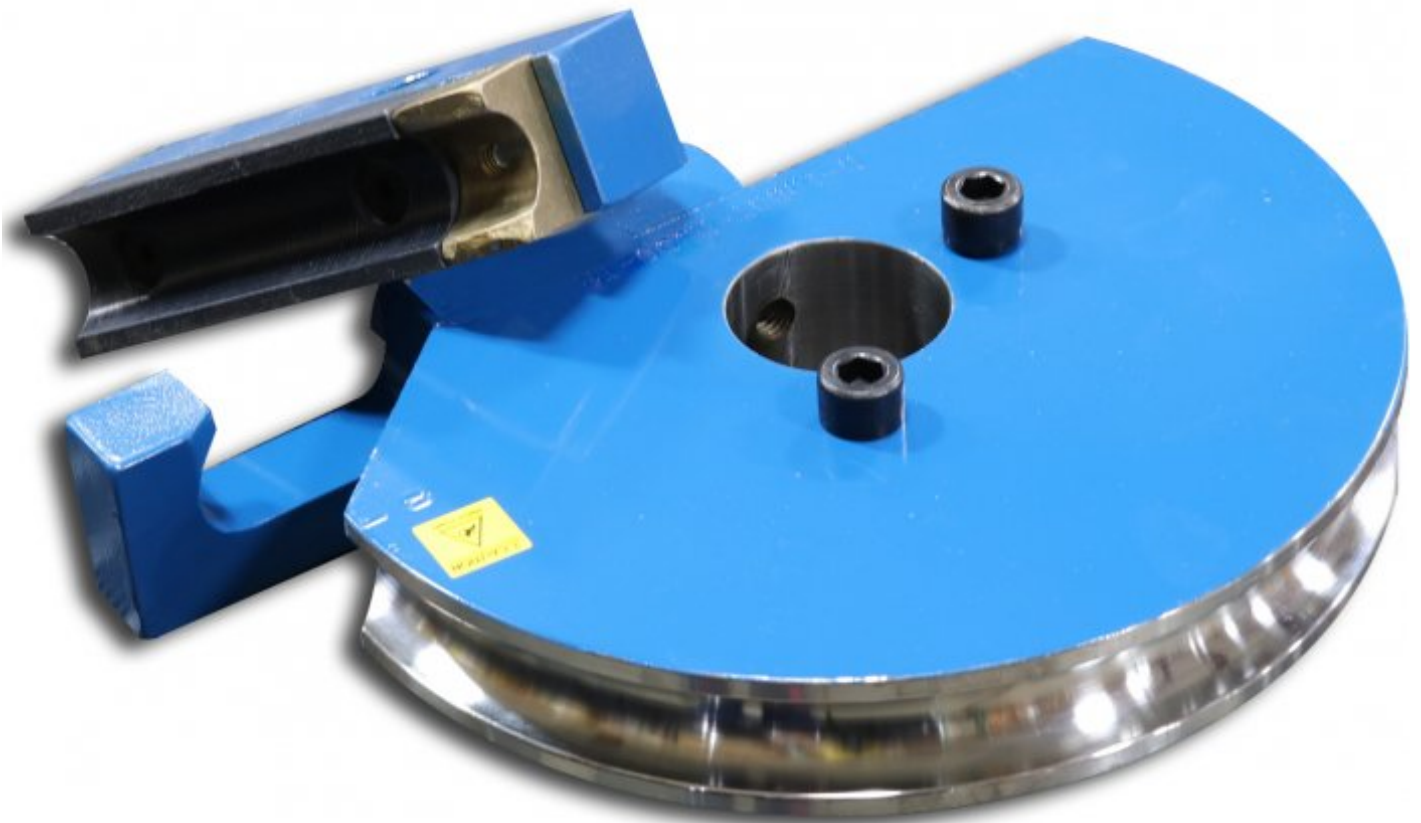


BAILEIGH DS-1750T-R600



44.45mm OD x 180° Round Tube Die Set

152.4mm CLR, Made from Steel



BAILEIGH 44.45mm OD x 180° Round Tube Die Set DS-1750T-R600

Description

44.45mm OD Round tube die set with a 152.4mm Center line Radius. Fits on all Baileigh Industrial rotary draw benders that accept drop on tooling (Not RDB-050). Center line radius is based on 2.413mm wall thickness.

Features

- 44.45mm OD steel former with 152.4mm centre line radius for 180 degree bends
- 2.413mm recommended minimum wall thickness
- 180 degree maximum bend angle
- Set includes forming die, counter die, and hook sleeve

Specifications

ORDER CODE	B8305
MODEL	DS-1750T-R600
Part Number	~
Type	Round Tube Die Set
Degree of Bend (Max) (Deg)	180°
Size (inch / mm)	44.45 OD
CLR - Centre Line Radius (inch / mm)	152.4
Recommended Min. Wall Thickness (inch / mm)	2.413
Material OD (inch / mm)	~
Suits Spigot Size (inch / mm)	~
Suits Machine Model	RDB Series (Not RDB-050)
Nett Weight (kg)	7